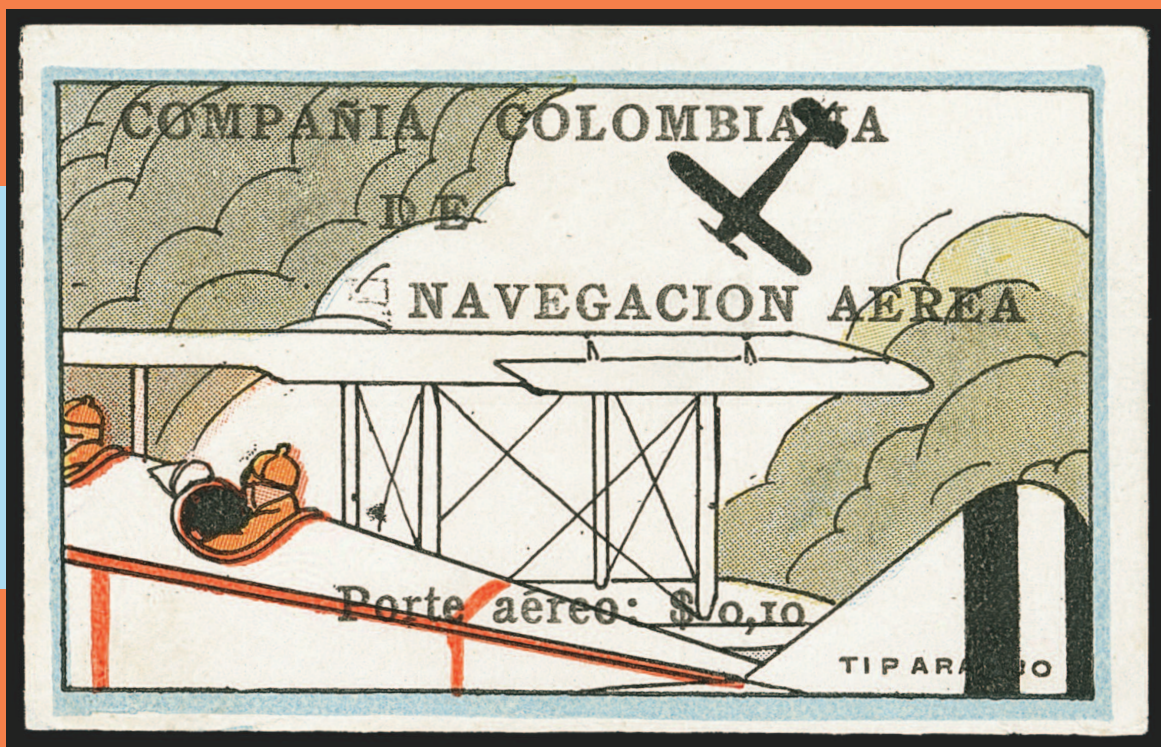


THE
BARRY P. FLETCHER
COLLECTION OF COLOMBIAN AIR POST ISSUES
1919-1923



INTERNATIONAL
Robert A. Siegel
IN ASSOCIATION WITH CHARLES F. SHREVE

SALE 1168 • NOVEMBER 14, 2017

SALE 1168—TUESDAY, NOVEMBER 14, 2017, AT 10:30 A.M.

— THE —
BARRY P. FLETCHER
COLLECTION OF COLOMBIAN AIR POST ISSUES
1919–1923

Live auction to be held at Siegel Auction Galleries,
6 West 48th Street (off Fifth Avenue), 9th Floor, New York City

Lots are sold subject to an **18% buyer's premium** and
any applicable sales tax (or customs duty for non-U.S. buyers)

Please carefully read the **Conditions of Sale** before bidding



Pre-Sale Viewing

Monday, November 13, 10am-4pm, and by appointment

I N T E R N A T I O N A L

Robert A. Siegel

IN ASSOCIATION WITH CHARLES F. SHREVE

6 WEST 48TH STREET, 9TH FLOOR, NEW YORK, N.Y. 10036
Phone (212) 753-6421 • Fax (212) 753-6429 • E-mail: stamps@siegelauctions.com

Catalogues, internet bidding, resources, archives and the Siegel Encyclopedia at
siegelauctions.com



INTERNATIONAL
Robert A. Siegel
 IN ASSOCIATION WITH CHARLES F. SHREVE

6 WEST 48TH STREET, 9TH FLOOR, NEW YORK, N.Y. 10036
 Phone (212) 753-6421 • Fax (212) 753-6429 • E-mail: stamps@siegelauctions.com
siegelauctions.com



Scott R. Trepel
 President
 strepel
 @siegelauctions.com



John P. Zuckerman
 Senior Vice President
 jzuckerman
 @siegelauctions.com



Corey Long
 Senior Vice President
 clong
 @siegelauctions.com



Daphne Cebek
 Accounts
 daphne
 @siegelauctions.com

Siegel International
 Dallas (214) 754-5991



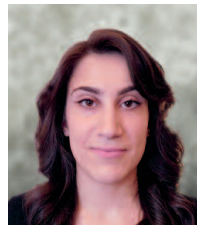
Charles F. Shreve
 Director, Siegel International
 charles
 @siegelauctions.com



Helen Stewart
 Bids and Inquiries
 helen
 @siegelauctions.com



Emma Masiello
 Bids and Inquiries
 emma
 @siegelauctions.com



Jocelyn Weibel
 Digital Production
 jocelyn
 @siegelauctions.com



Andrew Titley
 International Specialist
 andrew
 @siegelauctions.com



Chris Anderson
 International Specialist
 chris
 @siegelauctions.com

Scott R. Trepel Principal Auctioneer (licensed by NYC Dept. of Consumer Affairs, #795952)

Information for Bidders

Bidding

The following means are available for placing bids:

- 1) Attending the Live Auction in Person:** All bidders must register for a paddle, and new bidders must provide references at least three business days in advance of the sale.
- 2) Live Internet Bidding:** Instructions for participating as a Live Internet Bidder are provided on the page opposite.
- 3) Phone Bidding:** Bidders can be connected to the sale by phone and bid through a member of staff. Requests for phone bidding are subject to approval (please contact our office at least 24 hours before the sale). A signed Bid Form is required.
- 4) Absentee Bids.** All bids received in advance of the sale, either by mail, fax, phone, e-mail or internet, are Absentee Bids, which instruct the auctioneer to bid up to a specific amount on one or more lots in the sale. Absentee Bids sent by phone, fax or e-mail should arrive at least one hour prior to the start of the sale session. Bids entered through Live Internet Bidding will be visible to the auctioneer during the sale. Written bids should be entered legibly on the Bid Form in the sale catalogue. E-mail and internet bids should be carefully typed and double-checked. All new bidders must provide references. We recommend calling or e-mailing to confirm that Absentee Bids sent by mail, fax or e-mail have been received and entered.

Pre-Sale Viewing

Subject to availability, certain lots (except group lots) can be sent to known clients for examination. Requests must be made no later than 7 days prior to the sale. Lots must be returned on the day received. Postage/insurance costs will be invoiced.

In addition to regular viewing, clients may view lots by appointment. Our staff will be pleased to answer questions or provide additional information about lots.

Expert Certification

Individual items offered without a certificate dated within the past five years may be purchased subject to independent certification of genuineness and our description. **Please refer to the Conditions of Sale and Grading Terms for policies governing certification.**

Shipping and Delivery

Procedures and charges for shipping lots are printed on the back of the Bid Form. **Bidders are responsible for all prescribed shipping charges and any applicable sales tax or customs duties.**

Price Realized

Prices realized are sent with each invoice. Bidders with e-mail will receive a Bid Results report after the sale. Session results are posted immediately to **siegelauctions.com**

Live Internet Bidding at Siegel Auctions

BIDDING FROM YOUR COMPUTER LETS YOU BE PART OF THE LIVE AUCTION FROM ANYWHERE IN THE WORLD!

There's **NO SUBSTITUTE** for following the auction in real time.
Live Internet Bidding lets you bid and buy as though you were right there in the saleroom.
And it's easy.

This step-by-step guide will instruct you how to register, set your browser and use the bidding interface.

Start by following the simple steps to become a registered Live Internet Bidder.
Once you've been approved for bidding, you can listen to the auction and place bids with the click of a mouse.

Registering with STAMP AUCTION NETWORK & SIEGEL AUCTION GALLERIES

Live Internet Bidding is managed by Stamp Auction Network (SAN).
To bid, you must be registered and approved by *both* SAN and Siegel.
To decide what you need to do, choose the description below that best fits you.



I've already registered with SAN and have been approved by Siegel for internet bidding.

I'm a Siegel client, but I'm not registered with SAN.

Go to stampauctionnetwork.com/siegel and click on "Register" at the top. Check the box for Robert A. Siegel Auction Galleries (under "R") and submit the form, indicating you are a Siegel client. Once registered at SAN, you're ready for internet bidding.

I've bid through SAN before, but this is the first time I've bid in a Siegel sale.

Then you just need to be approved by Siegel. Go to stampauctionnetwork.com/siegel and click on "Update Registration" at the top. Your SAN account information will be sent to us for approval (you might be asked for other trade references). Once approved by Siegel for bidding, you're ready for internet bidding.

I've never bid with Siegel, nor registered with SAN.

Go to stampauctionnetwork.com/siegel and click on "Register" at the top. Check the box for Robert A. Siegel Auction Galleries (under "R") and submit the form **with your trade references** (please, no family members or credit card companies as references). Once registered at SAN and approved by Siegel for bidding, you're ready for internet bidding.

Live Internet Bidding works by allowing registered bidders to observe and place bids.

Live Internet Bidding will work with any browser on both PC and Mac operating systems.

Before bidding by internet for the first time, we recommend finding a sale in progress and listening to the public broadcast or logging in as a registered bidder. This will help you develop a feel for the sale tempo and bidding interface.

Log on to the auction at stampauctionnetwork.com

When you're logged on as a Live Internet Bidder, the bidding interface shows a photo and description of the lot, the current bid (and your bidding status), options for placing competitive bids and buttons with bid increments.

- After you click on a bid amount, the auctioneer is immediately notified of your bid.
- Retracting a bid is usually not acceptable, so please bid carefully.
- If you bid and then decide to stop, the "Pass" button will tell the auctioneer you are no longer bidding.
- You can send messages to the auctioneer (for example, a request for extension).
- You can track prior realizations from the bidding screen.



"System Down" or "Lost Connection" events do occasionally happen.

If you have any problems with Live Internet Bidding please call **212-753-6421** for immediate assistance.

Conditions of Sale (please read carefully before bidding)

THE PROPERTY DESCRIBED IN THIS CATALOGUE WILL BE OFFERED AT PUBLIC AUCTION BY ROBERT A. SIEGEL AUCTION GALLERIES, INC. ("GALLERIES") ON BEHALF OF VARIOUS CONSIGNORS AND ITSELF OR AFFILIATED COMPANIES. BY BIDDING ON ANY LOT, WHETHER DIRECTLY OR BY OR THROUGH AN AGENT, IN PERSON, OR BY TELEPHONE, FACSIMILE OR ANY OTHER MEANS, THE BIDDER ACKNOWLEDGES AND AGREES TO ALL OF THE FOLLOWING CONDITIONS OF SALE.

1. The highest bidder acknowledged by the auctioneer shall be the buyer. The term "final bid" means the last bid acknowledged by the auctioneer, which is normally the highest bid offered. **The purchase price payable by the buyer will be the sum of the final bid and a commission of 18% of the final bid ("buyer's premium"), together with any sales tax, use tax or customs duties due on the sale.**
2. The auctioneer has the right to reject any bid, to advance the bidding at his discretion and, in the event of a dispute, to determine the successful bidder, to continue the bidding or to reoffer and resell the lot in dispute. The Galleries' record of the final sale shall be conclusive.
3. All bids are per numbered lot in the catalogue unless otherwise announced by the auctioneer at the time of sale. The right is reserved to group two or more lots, to withdraw any lot or lots from the sale, or to act on behalf of the seller. The Galleries will execute bidding instructions on behalf of clients, but will not be responsible for the failure to execute such bids or for any errors in the execution of such bids.
4. **Lots with numbers followed by the symbol ° are offered subject to a confidential minimum bid ("reserve"), below which the lot will not be sold. The absence of the symbol ° means that the lot is offered without a reserve. If there is no reserve, the auctioneer has sole discretion to establish a minimum opening bid and may refuse an offer of less than half of the published estimate. Any lot that does not reach its reserve or opening bid requested by the auctioneer will be announced as "passed" and excluded from the prices realized lists after the sale. The Galleries may have a direct or indirect ownership interest in any or all lots in the sale resulting from an advance of monies or goods-in-trade or a guarantee of minimum net proceeds made by the Galleries to the seller.**
5. Subject to the exclusions listed in 5(A), the Galleries will accept the return of lots which have been misidentified or which have obvious faults that were present when the lot was in the Galleries' custody, but not so noted in the lot description. **All disputed lots must be received by the Galleries intact with the original packing material within 5 days of delivery to the buyer but no later than 30 days from the sale date.**
(5A) EXCLUSIONS: The following lots may not be returned for any reason, or may not be returned for the reasons stated: i) lots containing 10 or more items; ii) lots from buyers who registered for the pre-sale exhibition or received lots by postal viewing, thereby having had the opportunity to inspect them before the sale; iii) any lot described with "faults," "defects" or a specific fault may not be returned because of any secondary fault; iv) photographed lots may not be returned because of centering, margins, short/nibbed perforations or other factors shown in the illustrations; v) the color of the item does not match the color reproduction in the sale catalogue or website listing; vi) the description contains inaccurate information about the quantity known or reported; or vii) a certification service grades a stamp lower than the grade stated in the description.
6. Successful bidders, unless they have established credit with the Galleries prior to the sale, must make payment in full before the lots will be delivered. Buyers not known to the Galleries must make payment in full within 3 days from the date of sale. **The Galleries retains the right to demand a cash deposit from anyone prior to bidder registration and/or to demand payment at the time the lot is knocked down to the highest bidder, for any reason whatsoever.** In the event that any buyer refuses or fails to make payment in cash for any lot at the time it is knocked down to him, the auctioneer reserves the right to reoffer the lot immediately for sale to the highest bidder. **Credit cards (Visa, Mastercard and Discover only) can be accepted as payment but will be subject to a 3% Convenience Fee, which will be added to the total of the entire invoice (including hammer price, buyer's premium, shipping**

and transit insurance charges and any applicable taxes).

7. If the purchase price has not been paid within the time limit specified above, nor lots taken up within 7 days from the date of sale, the lots will be resold by whatever means deemed appropriate by the Galleries, and any loss incurred from resale will be charged to the defaulting buyer. **Any account more than 30 days in arrears will be subject to a late payment charge of 1½% per month as long as the account remains in arrears. Any expenses incurred in securing payment from delinquent accounts will be charged to the defaulter.** A fee of \$250.00 per check will be charged for each check returned for insufficient funds.
8. All lots are sold as genuine. **Any lot accompanied by a certificate issued by The Philatelic Foundation, British Philatelic Association, Royal Philatelic Society of London or any other authority recognized by the A.I.E.P. in a specific area of expertise, and dated within 5 years of the sale date, is sold "as is" and in accordance with the description on the certificate. Such lots may not be returned for any reason, including but not limited to a contrary certificate of opinion.** Buyers who wish to obtain a certificate for any item that does not have a certificate (dated as above) may do so, provided that the following conditions are met: (1) the purchase price must be paid in full, (2) the item must be submitted to an acceptable expertizing committee with a properly executed application form within 21 days of the sale, (3) a copy of the application form must be given to the Galleries, (4) in the event that an adverse opinion is received, the Galleries retain the right to resubmit the item on the buyer's behalf for reconsideration, without time limit or other restrictions, (5) unless written notification to the contrary is received, items submitted for certification will be considered cleared 90 days from the date of sale, and (6) in the event any item is determined to be "not as described", the buyer will be refunded the purchase price and the certification fee up to \$800.00 unless otherwise agreed.
9. Until paid for in full, all lots remain the property of the Galleries on behalf of the seller.
10. Agents executing bids on behalf of clients will be held responsible for all purchases made on behalf of clients unless otherwise arranged prior to the sale.
11. The buyer assumes all risk for delivery of purchased lots and agrees to pay for prescribed shipping costs. **Buyers who receive lots in the U.S. are obligated to pay whatever sales tax or compensating use tax might be due, and buyers outside the U.S. are responsible for all customs duties.**
12. **The bidder consents that any action or proceeding against it may be commenced and maintained in any court within the State of New York or in the United States District Court for the Southern District of New York, that the courts of the State of New York and United States District Court for the Southern District of New York shall have jurisdiction with respect to the subject matter hereof and the person of the bidder. The bidder agrees not to assert any defense to any action or proceeding initiated by Galleries based upon improper venue or inconvenient forum. The bidder agrees that any action brought by the bidder shall be commenced and maintained only in a Federal Court in the United States District Court for the Southern District of New York or the State Court in the county in which Galleries has its principal place of business in New York. The bidder agrees not to use a public conflict resolution service and not to use any form of social media to publish comments or information about the Galleries and its employees which might harm the Galleries' reputation or business. These Conditions of Sale shall be governed by and construed in accordance with the substantive laws of the State of New York, and shall constitute an agreement that shall be binding on the parties, and their respective heirs, administrators, distributees, successors and assignees.**

SCOTT R. TREPEL, Principal Auctioneer
Auctioneer's License No. 795952
N.Y.C. Department of Consumer Affairs
80 Lafayette Street, New York, N.Y. 10013
Telephone (212) 577-0111

Revised 1/2017

Grades, Abbreviations and Values Used in Descriptions

Grades and Centering

Our descriptions contain detailed information and observations about each item's condition. We have also assigned grades to stamps and covers, which reflect our subjective assessment. For stamps, the margin width, centering and gum are described and graded according to generally-accepted standards (an approximate correlation to numeric grades is provided at right). Although we believe our grades are accurate, they are not always exactly aligned with third-party grading terms or standards for all issues. **A lot may not be returned because a certification service grades a stamp lower than the grade stated in the description. Information from the P.S.E. Stamp Market Quarterly and P.S.E. Population ReportSM is the most current available, but lots may not be returned due to errors or changes in statistics or data.**

Extremely Fine Gem (90-100): The term "Gem" describes condition that is the finest possible for the issue. This term is equivalent to "Superb" used by grading services.







Extremely Fine (80-90): Exceptionally large/wide margins or near perfect centering.

Very Fine (70-85): Normal-size margins for the issue and well-centered with the design a bit closer to one side. "Very Fine and choice" applies to stamps that have desirable traits such as rich color, sharp impression, freshness or clarity of cancel.

Fine (60-70): Smaller than usual margins or noticeably off center. Pre-1890 issues may have the design touched in places.

Very Good (below 60): Attractive appearance, but margins or perforations cut into the design.

Guide to Gum Condition

Gum Categories:	MINT N.H.	ORIGINAL GUM (O.G.)				NO GUM
	 Mint Never Hinged <i>Free from any disturbance</i>	 Lightly Hinged <i>Faint impression of a removed hinge over a small area</i>	 Hinge Mark or Remnant <i>Prominent hinged spot with part or all of the hinge remaining</i>	 Part o.g. <i>Approximately half or more of the gum intact</i>	 Small part o.g. <i>Approximately less than half of the gum intact</i>	 No gum <i>Only if issued with gum</i>
Catalogue Symbol:	★ ★	★	★	★	★	(★)
PRE-1890 ISSUES	<i>Pre-1890 stamps in these categories trade at a premium over Scott value</i>			Scott Value for “O.G.”		Scott “No Gum” Values thru No. 218
1890-1935 ISSUES	Scott “Never Hinged” Values for Nos. 219-771	Scott Value for “O.G.” (Actual value will be affected by the degree of hinging)		Disturbed Original Gum: Gum showing noticeable effects of humidity, climate or hinging over more than half of the gum. The significance of gum disturbance in valuing a stamp in any of the Original Gum categories depends on the degree of disturbance, the rarity and normal gum condition of the issue and other variables affecting quality. For example, stamps issued in tropical climates are expected to have some		
1935 TO DATE	Scott Value for “Unused”					

Covers

Minor nicks, short edge tears, flap tears and slight reduction at one side are normal conditions for 19th century envelopes. Folded letters should be expected to have at least one file fold. Light cleaning of covers and small mends along the edges are accepted forms of conservation. Unusual covers may have a common stamp with a slight crease or tiny tear. **These flaws exist in virtually all 19th century covers and are not always described. They are not grounds for return.**

Catalogue Values and Estimates

Unless otherwise noted, the currently available *Scott Catalogue* values are quoted in dollars with a decimal point. Other catalogues are often used for foreign countries or specialized areas and are referred to by their common name: *Stanley Gibbons* (SG), *Dietz*, *American Air Mail Catalogue* (AAMC), *Michel*, *Zumstein*, *Facit*, etc. Estimates are indicated with an "E." and reflect our conservative valuation in dollars. Reserves will never exceed the low end of the estimate range; they will sometimes exceed Scott Catalogue value for stamps in Extremely Fine condition.

Because of certain pricing inconsistencies in the *Scott Catalogue*—for example, blocks that have no gum, the absence of premiums for Mint N.H. items, etc.—we cannot guarantee the accuracy of values quoted for multiples, specialized items and collection lots. We generally try to be conservative, but buyers may not return a lot because of a discrepancy in catalogue value due to Scott pricing inconsistencies.

Symbols and Abbreviations (see chart above for gum symbols)

⊞	Block	E	Essay	pmk.	Postmark	No.	Scott Catalogue Number
⊞	Cover	P	Proof	cds	Circular Datestamp	hs	Handstamp
FC	Fancy Cancel	TC	Trial Color Proof	var.	Variety	ms.	Manuscript

The Barry P. Fletcher Collection

The early Colombian Air Post stamps and the flight covers on which they were used are among the most “classic” and beautiful of any worldwide air post issues.

Assembled over the course of many years, Mr. Fletcher’s collection of Colombian Air Post stamps and covers is one of the most comprehensive ever formed. It is replete with rare or unique items, many of which formed the cornerstones of famous collections previously assembled by individuals such as Rendon, Boonschaft, Gebauer, Goeggel and Johnson. Mr. Fletcher’s name will surely be added to the provenance of important items as they pass to future generations of collectors.

Mr. Fletcher authored the definitive book on the subject, *A Collectors Notes and Comments on the Rare and Mysterious Colombian Airmails, 1919-1923*, which accurately and exhaustively details the stamps and covers from this remarkable period of South American aviation history. To encourage and assist others, Mr. Fletcher has made his book available online at www.barry-fletcher.com.

About Barry P. Fletcher

Barry P. Fletcher is a graduate of the University of Cape Town. Now retired, he is a specialist in international taxation and economics, having been a member of the International Tax Planning Association (London) for more than 30 years. He has also been featured as a speaker at the University of Oxford, as well as numerous other conferences in various jurisdictions around the world. In addition to pursuing his philatelic interests, Mr. Fletcher is also a keen international rock climber and amateur (ham) radio operator, having traveled to more than 30 countries and islands to follow his passions and work.

Colombian Air Post stamps were not Mr. Fletcher’s first collection, nor will they likely be his last. He has collected and sold world-class collections of Basutoland Officials, French Occupation of Togo and Seychelles.



In Memoriam Brian Moorhouse (1949-2017)

On July 15, 2017, the world lost a remarkable man and one of philately’s most dedicated professionals. Brian Moorhouse, one of the foremost experts in Latin American philately, spent 45 years working tirelessly assisting collectors in building important collections. Brian generously shared his knowledge of philately with many collectors and dealers, and his expert certificates of opinion are considered to be the gold standard for Latin American items. Brian’s willingness to share his encyclopedic knowledge was characteristic of his spirit and helped encourage many collectors. Mr. Fletcher met Brian soon after he began to collect Colombian Air Posts, and through the years Brian was his mentor and helped him to acquire some of the key pieces in the collection. Mr. Fletcher has dedicated this catalogue to Brian’s memory.

— THE —
BARRY P. FLETCHER
 COLLECTION OF COLOMBIAN AIR POST ISSUES
 1919-1923

MORNING SESSION (LOTS 3001-3136)
 TUESDAY, NOVEMBER 14, 2017, AT 10:30 A.M.

1919 KNOX MARTIN AIR POST

The Colombia 1919 Knox Martin Air Post stamp, Scott C1, has always been keenly sought after by collectors, its scarcity due to limited production. The fascinating history behind the production and, more importantly, the pilot, is often overlooked due to the elusiveness of reliable information.

Lieutenant William Knox Martin was born in 1894 in Salem, Virginia. By the age of 19, Martin was already piloting a Curtiss biplane on an expedition in Venezuela. Lieutenant Martin quickly built a reputation as an early aviator. Up until World War I, in which he served in the Marine Corps Aviation, he was known for assisting the Mexican revolutionary forces led by Pancho Villa and Zapata, training Dr. Sun Yat-sen's military pilots in China, test piloting for Boeing and even working with the Canadian Royal Air Force.

Lieutenant Martin eventually returned to South America in 1919 and purchased a surplus Curtiss "Jenny." His goal was to connect the interior of Colombia to the coast and, therefore, to the rest of the world. The treacherous terrain of Colombia, with various mountain ranges including the Andes, made travel from the coast to cities such as Bogota difficult. By the beginning of the 20th century, there were less than 100 miles of roads in Colombia, and trains were not conducive to transport. Mail going from the coast to Bogota could take upwards of a month via river and pack mules. Martin aimed make the journey by plane in six hours.

By early June 1919, Lieutenant Martin built the Curtiss Jenny named "Bolivar." On June 18, 1919, Martin pioneered a flight from Barranquilla to Puerto Colombia. While only a distance of roughly 20 kilometers, the flight was still faster than on horseback. He flew a bag of mail, believed to contain between 160 and 215 pieces in total. The following lots are connected to this flight.

Lieutenant Martin went on to complete the first aerial crossing of the Andes, becoming a local hero and legend. He completed multiple flights and trained other pilots in hope of commercial routes. By 1923, Martin married and settled in Barranquilla. He unfortunately, and ironically, died an early death in 1927 in an automobile accident.

Stamps were printed for the experimental flight that took place on June 18, 1919. There remains a certain level of conjecture about the exact printing totals. Originally, 200 examples were thought to have been overprinted using a row of 10 overprints. Some theorize that 260 examples were overprinted. Each position of the overprint is identifiable, with position 5 being the most distinct, showing the "1" with serif. Once overprinted, the strips of ten were removed from the sheet by a sharp knife. Therefore, the only multiples known are in pairs or strips of three or four – most of which include the serif "1" variety – and cut or blunt perforations are endemic to this issue, with most examples showing some degree of damaged perforations. Research suggests no more than 3-4 unused singles exist for each position. **The Scott Catalogue states "values are for faulty stamps."**



Positions 1-10

1919 KNOX MARTIN AIR POST ISSUE

Arranged by position



3001

- 3001 ★ 1919, 2c Knox Martin Air Post (C1). Position 1, slightly dried original gum, h.r., couple cut perfs at top as usual and slight toning around edges, Fine appearance, with 2016 Moorhouse certificate, Scott \$3,500.00 E. 750-1,000



3002

- 3002 ★ 1919, 2c Knox Martin Air Post (C1). Position 2, minor h.r., well-centered, couple typical cut perfs at top, small perf tear at bottom, Very Fine appearance, ex Toro, Scott \$3,500.00 E. 750-1,000



3003

- 3003 ☒ 1919, 2c Knox Martin Air Post (C1). Position 2, well-centered single, tied by Barranquilla Jun. 18, 1919 circular datestamp and target cancel on cover to Puerto Colombia, arrival datestamp also ties stamp, Very Fine, only 160 covers flown E. 500-750

- 3004 ★ **1919, 2c Knox Martin Air Post (C1).** Position 3, large part original gum, full perfs all around which is quite scarce for this issue, barest trace of toning, otherwise Very Fine, approximately three from this position are believed to exist, ex "Beville", signed Champion and with 2009 Colomphil certificate incorrectly as Position 1, Scott \$3,500.00 E. 1,000-1,500



3004



3005

- 3005 ★ **1919, 2c Knox Martin Air Post (C1).** Position 4, small h.r., remarkably well-centered, bright fresh color, full perfs not often seen on this issue

EXTREMELY FINE. EASILY ONE OF THE FINEST KNOWN EXAMPLES OF THE 1919 2-CENT KNOX MARTIN AIR POST FROM THE PARTICULARLY SCARCE POSITION 4. ONLY TWO EXAMPLES FROM THIS POSITION ARE BELIEVED TO EXIST AS SINGLES.

Theoretically, while equal quantities of each position were printed, most were used on cover. Of the remaining unused examples, three multiples include Position 4, making singles quite rare.

With 2014 Sismondo certificate. Scott \$3,500.00 which notes "values are for faulty stamps". E. 2,000-3,000

- 3006 ★ **1919, 2c Knox Martin Air Post, Numeral "1" with Serif (C1a).** Position 5, large part original gum, precise centering with full perfs all around (scarce thus), fresh color, slightest trace of toning at top left

VERY FINE AND RARE EXAMPLE OF THE KNOX MARTIN FROM POSITION 5 WITH SERIF "1". ONLY NINE UNUSED EXAMPLES ARE BELIEVED TO EXIST.

Of the 26 examples printed of Position 5, nine are unused (four in strips or pairs and five singles), twelve are on covers and five are used or on piece. Oddly enough, there are believed to be more unused Position 5 than any other position. Some theorize this was due to the obvious difference and thus demand by collectors who specifically requested this variety.

Ex Goeggel. Signed Bloch. With 2014 Moorhouse certificate. Scott \$7,250.00 E. 2,000-3,000



3006



3007

1919, 2c Knox Martin Air Post, Numeral "1" with Serif (C1a). Position 5, excellent centering, rich color on fresh paper, target, Barranquilla and Puerto Colombia circular datestamps

VERY FINE. A LOVELY USED EXAMPLE OF THE POSITION 5 SHOWING THE SERIF "1" VARIETY. ONLY SEVENTEEN USED EXAMPLES ARE BELIEVED TO EXIST, OF WHICH FIVE ARE OFF-COVER.

Signed Champion. With 1987 Rendon certificate. Scott \$4,250.00..... E. 1,500-2,000

3007



3008

- 3008 ☒ **1919, 2c Knox Martin Air Post, Numeral "1" with Serif (C1a).** Position 5, tied by Barranquilla Jun. 18, 1919 circular datestamp on "German C. Palacio B." printed cover to Puerto Colombia, arrival datestamp also ties stamp, stamp with slightly trimmed perfs at bottom as usual

VERY FINE. A SPLENDID EXAMPLE OF KNOX MARTIN POSITION 5 SHOWING THE SERIF "1" ON FLOWN COVER. OF THE 26 PRINTED FROM THIS POSITION, ONLY TWELVE COVERS HAVE BEEN RECORDED ON AN EQUAL NUMBER OF COVERS.

Of interesting note, the reverse is signed "R.E.R. Dalwick," who was a prominent philatelist at the time and authored a few philatelic books. Signed A. Diena. With 1962 P.F. certificate. E. 2,000-3,000

- 3009 ★ **1919, 2c Knox Martin Air Post (C1).** Position 7, traces of dried original gum, well-centered, slight overall toning (not mentioned on accompanying certificate), Fine, with 2010 Colomphil certificate incorrectly as Position 1, Scott \$3,500.00 E. 750-1,000



3009



3010



3011



3012

- 3010 ★ **1919, 2c Knox Martin Air Post (C1).** Position 8, traces of dried original gum, excellent centering, fresh color, slight scissor separation at top left as usual, Very Fine, a handsome example, with 1950 P.F. and 2015 Moorhouse certificates, the latter incorrectly stating Position 7, Scott \$3,500.00 E. 750-1,000
- 3011 ★ **1919, 2c Knox Martin Air Post (C1).** Position 9, original gum, well-centered, rich color on fresh paper, full perfs all around
- VERY FINE AND SOUND EXAMPLE OF THE KNOX MARTIN AIR POST FROM POSITION 9. A RARE STAMP IN THIS PRISTINE QUALITY.
- Signed Champion. With Roig (undated), 2002 P.F. and 2015 Moorhouse certificates. Scott \$3,500.00 stating "values are for faulty stamps"..... E. 1,500-2,000
- 3012 ★ **1919, 2c Knox Martin Air Post (C1).** Position 10, original gum (certificate notes "slightly dried" which we feel is harsh), well-centered, slightest trace of edge toning and couple cut perfs at bottom right as normal, otherwise Very Fine, signed Sanabria and Kessler, with 2015 Moorhouse certificate, Scott \$3,500.00 E. 750-1,000



3013

- 3013 ☒ **1919, 2c Knox Martin Air Post (C1).** Position 10, tied by Barranquilla Jun. 18, 1919 circular datestamp on "Pinedo, Weeber & Cia." corner card cover to Puerto Colombia, arrival circular datestamp also ties stamp, Very Fine, with 2010 Moorhouse certificate, only 160 covers flown..... E. 500-750

COMPAÑÍA COLOMBIANA DE NAVEGACIÓN AÉREA (CCNA) FIRST ISSUE

Formation of the CCNA

The Compañía Colombiana de Navegación Aérea – CCNA – was founded on September 16, 1919, in Medellín. Five retired French World War I planes were acquired, one of which never saw use. The first test flight took place on February 14, 1920, though no mail was recorded as having been carried. The first operational mail service was set for February 22, 1920, from Cartagena to Barranquilla – a distance just shy of 120 kilometers. Pilots Rene Bazin and Jacques Jourdanet used the plane “Cartagena” and carried two passengers – Guillermo Echavarría (Manager of CCNA) and George Goupil (Mechanic). A total of 4 kilograms of mail was carried. The return flight was scheduled shortly after for March 4, 1920, and returned to Cartagena. This was also the first official passenger flight and carried two individuals – Eduardo de la Espriella and Mario Santodomingo.

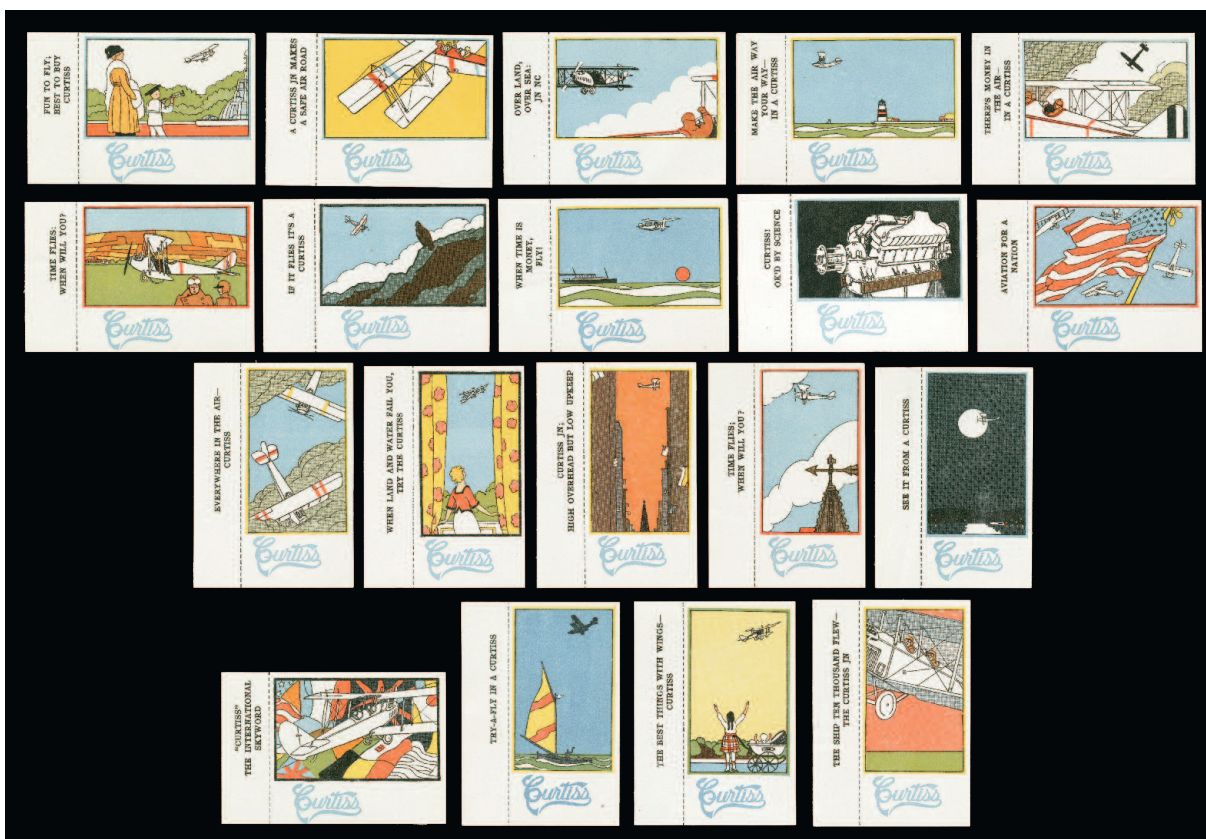
Production of CCNA First Issue Stamps

The CCNA was granted permission to produce postage stamps for their flights. There was a severe shortage of time to create and produce stamps for the February 22 flight. The pictorial Curtiss Aeroplane and Motor Car Company cigarette stamps are widely regarded as the most beautiful air post stamps produced. It is believed that 100 sets of 20 were purchased. Of those, nine were surcharged for use, creating Scott Nos. C2-C10. These were selected as the most appropriate stamps and the ones that showed the surcharge best. It is believed that less than 10 sets remain without the overprint, with the exception of No. C3, of which only one or two unsurcharged examples are known. The surcharge was applied by Miguel Araujo, publisher of *El Porvenir* in Cartagena, who had the selva cut off and also printed his imprint at the bottom right corner. Remarkably, one unsurcharged stamp managed to escape and was used on the outgoing flight. This major Colombian Air Post rarity, Scott No. C8, is the only recorded example and is featured as lot 3030.

Significance of Post-March 4 Flights

After the outbound and return flights of February 22 and March 4, respectively, only a few examples of the First Issue CCNA stamps were still available. Coupled by the fact that the next issue, the 10c Green, was available for the next flight on March 6, to date only seven examples have been recorded used after March 4. Some believe there could have been shortages of the newly issued 10c Green. Three of the seven known were used on the October 17 flight carrying Charles Pooley, the Chief Engineer of The Colombia Railways and Navigation Co., with recorded items addressed to him. It is surmised that these covers were souvenirs of sorts, as the flight log indicates the flight was an hour long at heights of up to 800 feet. The article written by Carlos Valenzuela in the March 2001 *Bogotá Filatélico* No. 34 provides a valuable study of these rare flights.

Scott - Description	Unused Recorded	Outbound Flight Recorded	Return Flight Recorded
C2 – Woman and Boy Watching Plane	38	7	11
C3 – Clouds and Small Biplane at Top	27	11	10
C4 – Tilted Plane Viewed Close-Up from Above	31	12	10
C5 – Flier in Plane Watching Biplane	53	7	7
C6 – Lighthouse	50	9	7
C7 – Fuselage and Tail of Biplane	15 (Rarest)	10	7
C8 – Condor on Cliff	36	6	13
C9 – Plane at Rest	41	5 (Rarest)	11
C10 – Ocean Liner	24	62	4 (Rarest)



3014

3014

Curtiss Aeroplane Co., Promotional Labels. Set of nineteen labels, each with selvage at left showing various air post slogans and italic blue "Curtiss" at bottom, these include the nine designs selected for overprinting by SCADTA to produce Colombia Nos. C2-C10, bright and fresh colors throughout, missing the design for No. C3 as usual since only one or two examples are believed to exist

EXTREMELY FINE. A BEAUTIFUL AND RARE SET OF THE CURTISS AEROPLANE CO. PROMOTIONAL LABELS WITHOUT OVERPRINT - SUBSEQUENTLY NINE WERE OVERPRINTED TO CREATE NOS. C2-C10. A KEY SET AND FORERUNNER TO ANY COLOMBIA AIR POST COLLECTION.

The labels were produced for advertising for use in cigarette packs for the Curtiss Aeroplane Co. and feature the iconic Curtiss JN ("Jenny") in various scenes. The artist is unknown. Nine of the labels, without selvage, were overprinted by the Compañía Colombiana de Navegación Aérea (SCADTA) under contract with the Colombian Government, for use as Air Post stamps. The others were deemed inconvenient to arrange for the overprint or not appropriate for use. It is believed that 100 sets were purchased, though not proven, and only one or two of the Jenny in clouds design used for C3 were not overprinted. E. 3,000-4,000

3015 ★ **1920, 10c "SCADTA", Woman and Boy Watching Plane (C2).** Without gum as issued, large balanced margins, lovely colors

VERY FINE AND SCARCE. ONLY 38 UNUSED EXAMPLES HAVE BEEN RECORDED.

With 2010 Colomphil and 2010 Moorhouse certificates. Scott \$3,000.00....
..... E. 1,500-2,000



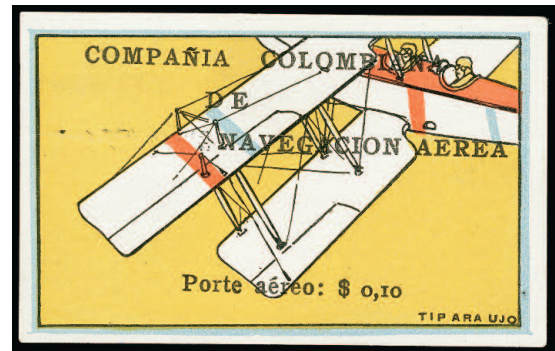
3015



3016

- 3016 ★ **1920, 10c "SCADTA", Clouds and Small Biplane at Top (C3).** Without gum as issued, large margins all around, rich colors, barest trace of a hinge thin, Extremely Fine appearance, with only 27 unused examples recorded, this is the third rarest of the set to acquire, signed Bloch, with 2004 Rendon and 2015 Moorhouse certificates, the former not mentioning thin, Scott \$3,800.00 E. 1,000-1,500

- 3017 ★ **1920, 10c "SCADTA", Tilted Plane Viewed Close-Up from Above (C4).** Without gum as issued, huge margins, bright and fresh colors, light horizontal crease, Extremely Fine appearance, only 31 unused examples recorded, Scott \$4,600.00..... E. 1,000-1,500



3017



3018

- 3018 ★ **1920, 10c "SCADTA", Flier in Plane Watching Biplane (C5).** Without gum as issued, large balanced margins, excellent colors on bright paper
- VERY FINE AND CHOICE. A DELIGHTFUL EXAMPLE OF THIS COLORFUL AIR POST STAMP. ONLY 53 UNUSED EXAMPLES ARE KNOWN.

With 1977 Friedl certificate. Scott \$3,500.00 ..
..... E. 1,500-2,000

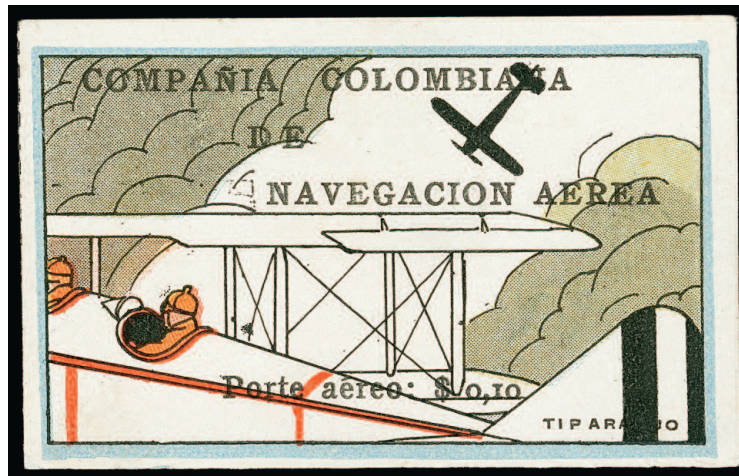
- 3019 ★ **1920, 10c "SCADTA", Lighthouse (C6).** Without gum as issued, large margins, bright and fresh

VERY FINE EXAMPLE OF THIS SCARCE AIR POST STAMP. ONLY 50 UNUSED EXAMPLES HAVE BEEN RECORDED.

Signed Kessler. Scott \$3,000.00.....
..... E. 1,000-1,500



3019



3020

- 3020 ★ **1920, 10c “SCADTA”, Fuselage and Tail of Biplane (C7).** Without gum as issued, large to full margins, rich colors on fresh paper, slightly mended rounded corner clear of design and not mentioned on accompanying certificates

VERY FINE. THE KEY UNUSED CCNA STAMP OF THE SERIES TO ACQUIRE. A MERE FIFTEEN UNUSED EXAMPLES HAVE BEEN RECORDED. A MAJOR COLOMBIAN AIR POST RARITY.

Our research notes that most of the other known examples have faults such as tone spots, creases and thins. This is the first example we have offered since keeping computerized records. Ex Gebauer. With P.F. (which no longer accompanies) and 2009 Colomphil certificate. Scott \$11,000.00. E. 4,000-5,000



3021

- 3021 ★ **1920, 10c “SCADTA”, Condor on Cliff (C8).** Without gum as issued, large margins to barely clear at left as typically seen on this stamp, rich colors

VERY FINE AND RARE. A DESIRABLE UNUSED EXAMPLE OF THE CONDOR ON CLIFF. ONLY 36 EXAMPLES HAVE BEEN RECORDED.

With 2009 Moorhouse certificate. Scott \$6,000.00..... E. 3,000-4,000



3022

3022 ★ **1920, 10c “SCADTA”, Plane at Rest (C9).** Without gum as issued, large balanced margins, vibrant colors

EXTREMELY FINE. A CHOICE EXAMPLE OF THIS AIR POST RARITY, WITH ONLY 41 EXAMPLES RECORDED.

With 1999 P.F. certificate. Scott \$3,500.00 E. 2,000-3,000



3023

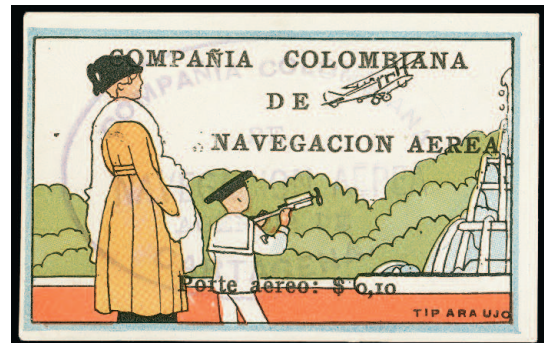
3023 ★ **1920, 10c “SCADTA”, Ocean Liner (C10).** Without gum as issued, mostly large margins, full at bottom (larger than typically seen), excellent colors

VERY FINE AND CHOICE. A PRISTINE AND RARE EXAMPLE OF THE OCEAN LINER. ONLY 24 EXAMPLES HAVE BEEN RECORDED.

This is the second rarest unused stamp of the set to acquire. Ex Gebauer. With 2009 Colomphil certificate. Scott \$4,600.00 E. 2,000-3,000

OUTBOUND FLIGHT

3024 **1920, 10c “SCADTA”, Women and Boy Watching Plane - Outbound Flight (C2).** Large to full margins, clear violet **Cartagena** oval handstamp, small corner crease, otherwise Very Fine, **only seven covers** bearing this stamp were used on the outbound flight, signed Bloch, Scott \$1,875.00 E. 500-750



3024



3025

- 3025 ☒ **1920, 10c “SCADTA”, Clouds and Small Biplane at Top - Outbound Flight (C3).** Large to full margins, cancelled by violet Cartagena oval handstamp and used with National 3c tied by Cartagena Feb. 22, 1920 double-circle datestamp on cover to Barranquilla, arrival circular datestamp also ties CCNA stamp, cover with couple file folds not affecting stamps and slightly reduced at left, Very Fine, **only eleven covers** bearing this stamp were flown on the outbound flight, with 1980 E. Dena certificate E. 1,000-1,500



3026

- 3026 **1920, 10c “SCADTA”, Tilted Plane Viewed Close-Up from Above - Outbound Flight (C4).** Large balanced margins, cancelled by violet Cartagena oval handstamp and used with National 1c and 2c stamps tied by Feb. 22, 1920 double-circle datestamp on cover front only to Barranquilla, CCNA stamp with light creases, otherwise Fine, **only twelve covers** with this stamp were on this flight, with 2002 P.F. certificate..... E. 750-1,000



3027 front and back

- 3027 ✉ **1920, 10c “SCADTA”, Flier in Plane Watching Biplane - Outbound Flight (C5).** Large margins all around, cancelled by violet Cartagena oval handstamp and with National 5c on other side tied by Feb. 22, 1920 double-circle datestamp on **picture post card** to Barranquilla, Feb. 23 arrival datestamp

VERY FINE. THE RAREST USED CCNA STAMP OF THE SERIES, WITH ONLY FOURTEEN USED EXAMPLES KNOWN AND SEVEN EXAMPLES FLOWN ON THE OUTBOUND FLIGHT. OF THOSE, THIS IS THE ONLY KNOWN POST CARD.

Post cards are particularly rare on any CCNA flight with very few recorded. The 5c used overpaid the rate. Ex Peinado and Johnson. With 2016 Moorhouse certificate..... E. 2,000-3,000



3028

- 3028 **1920, 10c “SCADTA”, Fuselage and Tail of Biplane - Outbound Flight (C7).** Large to full margins, violet Cartagena oval handstamp, used with National 3c tied by Feb. 22, 1920 double-circle datestamp that also ties CCNA stamp on small piece, CCNA with small scrape at left

STILL VERY FINE. ONLY SEVENTEEN USED EXAMPLES ARE KNOWN OF NO. C7 - TEN OF WHICH WERE USED ON THE OUTBOUND FLIGHT.

Ex Peinado. With 2009 Colomphil certificate. Scott \$3,800.00 simply as a used single..... E. 1,500-2,000



3029

- 3029 ✉ **1920, 10c "SCADTA", Fuselage and Tail of Biplane - Outbound Flight (C7).** Large to ample margins, tied by violet Cartagena oval handstamp and used with National 3c tied by Feb. 22, 1920 double-circle datestamp on Rafael Pereira corner card cover to Barranquilla, arrival datestamp also ties CCNA stamp, skillful minor aesthetic restoration at top of cover due to rough opening

VERY FINE AND EXCEPTIONALLY RARE USE WITH ONLY TEN COVERS ON THE OUTBOUND FLIGHT - EIGHT OF WHICH ARE KNOWN (PLUS TWO PIECES). A MERE SEVENTEEN USED EXAMPLES TOTAL OF THIS STAMP ARE RECORDED.

With 2003 Sismondo and 2007 Calves certificates..... E. 2,000-3,000





BARBARA ULLA

VICENTE PUCINI

SEÑOR DON



THE UNIQUE UNSURCHARGED SCADTA CONDOR STAMP ON FLOWN COVER

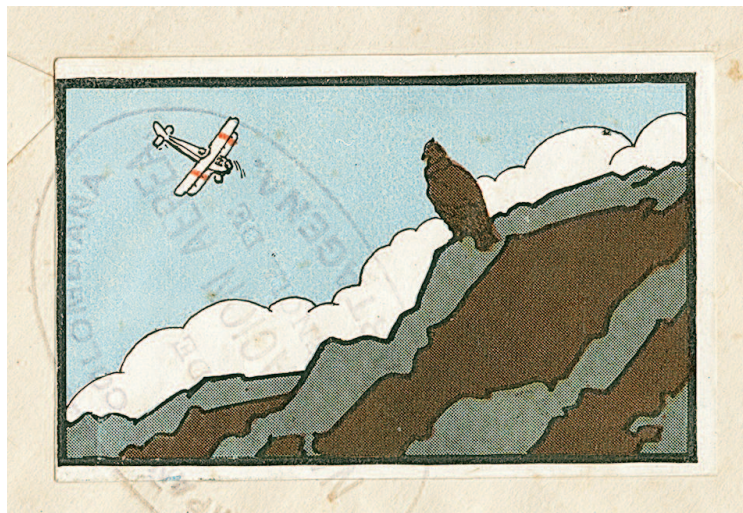
ONE OF THE GREAT AIR POST RARITIES OF THE WORLD

3030 ✉ **1920, 10c “SCADTA”, Condor on Cliff, Without Surcharge - Outbound Flight (C8 var).**
Large margins to clear at left, tied by violet Cartagena oval handstamp on reverse, used with National 1c and 2c stamps tied by Feb. 22, 1920 double-circle datestamp on cover to Barranquilla, arrival datestamp dated Feb. 23, file fold well away from adhesives, cover opened for display purposes

VERY FINE. THE SPECTACULAR AND UNIQUE EXAMPLE OF THE SCADTA CCNA UNSURCHARGED CONDOR STAMP ON OUTBOUND FLIGHT COVER. THE KEY PIECE TO ANY COLOMBIAN AIR POST COLLECTION AND ONE OF THE MOST ICONIC AIR POST RARITIES OF THE WORLD. A PERFECT ADDITION TO ANY WORLD-CLASS EXHIBIT AND HIGHLIGHT OF THE BARRY P. FLETCHER COLLECTION.

This magnificent cover bearing the **only recorded example** of the unsurcharged Condor stamp is one of the “Aristocrats” of worldwide Air Post philately. Without question, the stamp is one of the rarest Air Post issues in the world. It is rarer than other Air Post rarities that have commanded much higher prices, such as the 1925 “Black Honduras” (two known, one of which was lost), the Russia 1935 Moscow-San Francisco inverted surcharge (also with the lowercase Cyrillic “F” — approximately six known), or even the U.S. 1918 Inverted “Jenny” (100 printed and nearly as many known).

Illustrated in *The Air Post of Colombia* by Gebauer (1963) and other Colombia Air Post publications. Ex Cole, Serabrakian, Rendon, Boonshaft and Goeggel. Acquired privately by Mr. Fletcher in 2015 thru Brian Moorhouse. Signed Charlat and Bloch. With 2016 Moorhouse certificate. E. 35,000-45,000



3030 detail



3031

- 3031 ☒ **1920, 10c “SCADTA”, Condor on Cliff - Outbound Flight (C8).** Large margins to just touching at left (as usual), cancelled by violet Cartagena oval handstamp, used with National 1c and 2c stamps tied by violet Feb. 22, 1920 double-circle datestamps on corner card cover to Barranquilla, arrival handstamp also ties CCNA stamp, stamp with minute scuff and light bend

VERY FINE APPEARANCE. ONE OF ONLY SIX COVERS FLOWN WITH NO. C8 ON THE OUTBOUND FLIGHT. ONLY NINETEEN USED EXAMPLES OF THIS STAMP ARE RECORDED.

Only two other combinations are as rare - No. C9 outbound (five known) and C10 return (six known). Ex Gebauer. With 2009 Colomphil certificate. E. 2,000-3,000



3032 front and back



- 3032 ☒ **1920, 10c “SCADTA”, Plane at Rest - Outbound Flight (C9).** Large balanced margins, tied by violet Cartagena handstamp on reverse, used with National 1c and 2c tied by Feb. 22, 1920 double-circle datestamps on cover to Barranquilla, arrival backstamp, cover reduced at left, Very Fine and extremely rare outbound flight, **only five covers** with No. C9 are recorded with a total of sixteen stamps used in all, this is also the rarest CCNA of the set on either the outbound or return flight at five recorded, with 1996 Holcombe certificate..... E. 1,000-1,500



3033

- 3033 ☒ **1920, 10c “SCADTA”, Ocean Liner - Outbound Flight (C10).** Large to full margins, tied by violet Cartagena oval handstamp and used with National 3c tied by Feb. 22, 1920 double-circle datestamp on cover to Barranquilla, light arrival datestamp on front, cover slightly reduced at left, Very Fine, while numerically the most “common” outbound or return flight, only 62 examples have been recorded, Scott Retail as basic used stamp \$2,750.00 E. 750-1,000

RETURN FLIGHT



3034

- 3034 ☒ **1920, 10c “SCADTA”, Women and Boy Watching Plane - Return Flight (C2).** Large margins to full, tied by violet Barranquilla oval handstamp and used with 3c National stamp tied by Mar. 4, 1920 straightline and Barranquilla cancels on cover to Cartagena, departure circular datestamp on reverse
 VERY FINE AND RARE. ONLY ELEVEN EXAMPLES OF THIS STAMP WERE ON THE RETURN FLIGHT TO CARTAGENA.
 Signed Champion. E. 1,500-2,000



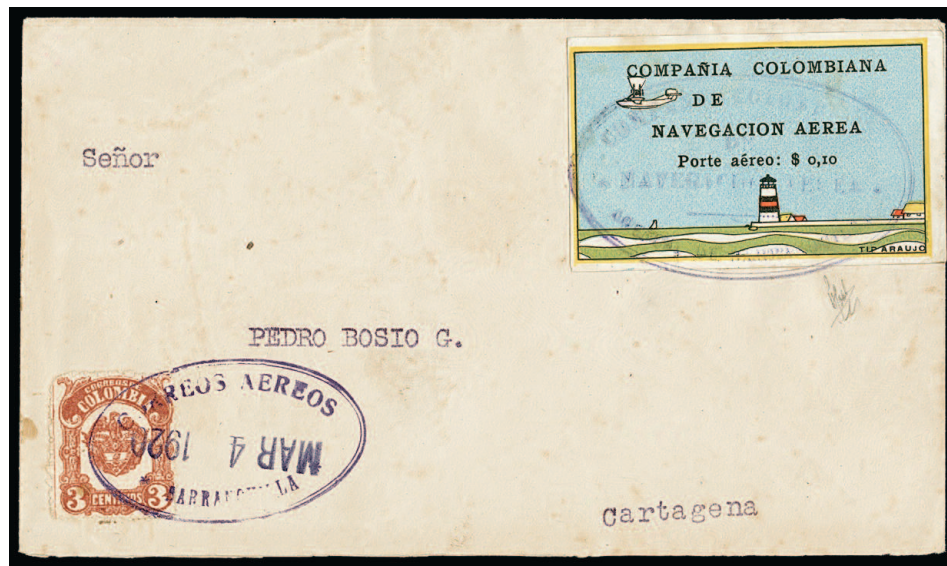
3035

- 3035 **1920, 10c "SCADTA", Clouds and Small Biplane at Top - Return Flight (C3).** Large balanced margins, used with National 3c, each tied by violet Barranquilla oval handstamps, 3c stamp additionally tied by Mar. 4, 1920 straightline on cover front only **addressed to Medellín**, some slight soiling, otherwise Fine and especially rare destination, **only ten covers** with this stamp flown on this flight, and of those **only two** are addressed to Medellín (others all Cartagena), ex Peinado..... E. 1,500-2,000



3036

- 3036 **1920, 10c "SCADTA", Flier in Plane Watching Biplane - Return Flight (C5).** Large balanced margins, tied by violet Barranquilla oval handstamp, used with National ½c pair and 5c tied by oval violet handstamp and Mar. 4, 1920 straightline on cover to Cartagena, arrival backstamp
 VERY FINE. ONLY FIVE COVERS ARE KNOWN ON THIS FLIGHT USING THE NO. C5. THIS IS ALSO THE RAREST USED OF THE CCNA ISSUE WITH ONLY FOURTEEN EXAMPLES RECORDED.
 Despite seven covers having been recorded on the return flight, there are at least one single and one piece recorded. As with most of the Banfi correspondence covers, this cover is overfranked. With 2009 Moorhouse certificate..... E. 2,000-3,000



3037

- 3037 ✉ **1920, 10c “SCADTA”, Lighthouse - Return Flight (C6).** Large to ample margins, used with National 3c and both tied by violet Barranquilla oval handstamps, 3c additionally tied by Mar. 4, 1920 straightline on cover to Cartagena, arrival backstamp, couple light tone spots of no consequence

VERY FINE. A RARE COVER WITH ONLY SEVEN EXAMPLES FLOWN ON THE RETURN FLIGHT. A TOTAL OF SIXTEEN USED NO. C6 ARE RECORDED.

Signed Charlat. With 1994 Holcombe certificate..... E. 1,500-2,000



3038

- 3038 ✉ **1920, 10c “SCADTA”, Condor on Cliff - Return Flight (C8).** Large margins to just clear at bottom left (as usually seen), used with National ½c and 1c stamps, all tied by two violet oval Barranquilla handstamps and Mar. 4, 1920 straightline on cover to Cartagena, arrival backstamp, cover barely reduced at left and with minor pressed out folds just affecting CCNA stamp

VERY FINE APPEARANCE. ONLY THIRTEEN NO. C8 COVERS WERE FLOWN ON THIS FLIGHT AND ONLY NINETEEN USED STAMPS TOTAL ARE RECORDED.

The 1½c National rate was likely intended to pay the unsealed printed matter rate. With 2016 Moorhouse certificate..... E. 2,000-3,000



3039



3040

- 3039 ☒ **1920, 10c “SCADTA”, Plane at Rest - Return Flight (C9).** Large balanced margins, tied by violet Barranquilla oval handstamp, used with National 3c tied by Barranquilla oval and Mar. 4, 1920 straightline on cover to Cartagena, arrival backstamp

EXTREMELY FINE. A HANDSOME USE OF NO. C9 ON A RETURN FLIGHT COVER - ONLY ELEVEN HAVE BEEN RECORDED WITH SIXTEEN USED TOTAL.

Signed A. Diena. With 1987 E. Diena certificate. E. 1,500-2,000

- 3040 **1920, 10c “SCADTA”, Ocean Liner - Return Flight (C10).** Large to full margins, light but clear violet **Barranquilla** oval handstamp, small thin and corner crease, Very Fine appearance, a rare return flight cancel of which **only six covers** were recorded on this flight, Scott Retail as basic used stamp \$2,750.00 E. 500-750



3041

- 3041 ☒ **1920, 10c “SCADTA”, Ocean Liner - Return Flight (C10).** Large to ample margins, tied by violet Barranquilla oval handstamp, used with National 3c tied by violet Barranquilla oval and Mar. 4, 1920 straightline on cover to Caratagena, arrival backstamp, cover slightly reduced at left

VERY FINE. AN ENORMOUSLY RARE ITEM WITH ONLY FOUR COVERS RECORDED WITH NO. C10 ON THE RETURN FLIGHT. A DIFFICULT ITEM TO ACQUIRE.

A total of six items have been recorded on the return flight - four covers (this example, ex Gebauer cover, ex Goeggel cover and ex Boonshaft, Peinado and Johnson cover) plus two singles (see lot 3040 and ex Goeggel piece). Signed Champion. With 2002 P.F. and 2010 Colomphil certificate. E. 2,000-3,000

POST-MARCH 4 FLIGHTS



3042

- 3042 ☒ **1920, 10c “SCADTA”, Tilted Plane Viewed Close-Up from Above - Post-March 4 Flight (C4).** Large margins all around, tied by violet Cartagena oval handstamp, used with National 3c tied by violet **Mar. 6, 1920** double-circle datestamp on outbound flight cover to Barranquilla, “Agencia Kodak, Vega & Co., Cartagena - Col.” handstamp at bottom left, Mar. 9 arrival backstamp

VERY FINE. A REMARKABLE POST-MARCH 4 COVER OF WHICH A MERE SEVEN ITEMS ARE RECORDED - ONLY THREE OF WHICH ARE FULL COVERS. THIS IS THE ONLY ITEM RECORDED FROM MARCH 6.

Of the seven items recorded used post-March 4th (three covers and four pieces), two have No. C2, three No. C4 and two No. C5. There is one dated Mar. 6, one Mar. 11, one Mar. 9, one Apr. 14 and three Oct. 17.

Ex Neuberger, Boonshaft, Peinado and Goeggel. With 2013 Moorhouse certificate..... E. 3,000-4,000



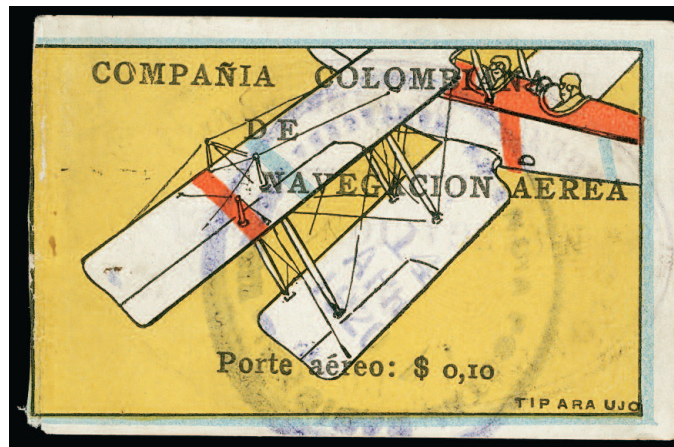
3043

- 3043 ☒ **1920, 10c “SCADTA”, Women and Boy Watching Plane - Post-March 4 Flight (C2).** Large to full margins, tied by violet Cartagena oval handstamp, used with National 3c tied by **Mar. 11, 1920** double-circle datestamp on outbound flight cover to Barranquilla, “Agencia Kodak, Vega & Co., Cartagena - Col.” handstamp at bottom left, Mar. 11 arrival datestamp also tying both stamps, cover with couple pressed out creases

VERY FINE AND EXTRAORDINARILY RARE POST-MARCH 4 COVER. THIS IS THE ONLY RECORDED COVER DATED MARCH 11 AND ONE OF THREE COVERS DATED AFTER MARCH 4.

There is some speculation this is dated Mar. 6 but we are in the belief it clearly reads Mar. 11. Of the seven items recorded used post-March 4th (three covers and four pieces), two have No. C2, three No. C4 and two No. C5. There is one dated Mar. 6, one Mar. 11, one Mar. 9, one Apr. 14 and three Oct. 17.

Ex Phillips, Boonshaft and Goeggel. With 2013 Moorhouse certificate..... E. 3,000-4,000



3044

- 3044 **1920, 10c “SCADTA”, Tilted Plane Viewed Close-Up from Above - Post-March 4 Flight (C4).** Large margins to touching at left, light violet Barranquilla oval and clear violet Cartagena **Apr. 14, 1920** circular datestamp, stamp with some faults of little consequence

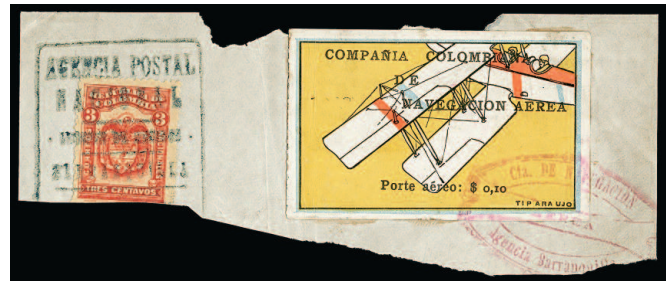
FINE APPEARANCE AND UNIQUE. THIS IS THE ONLY RECORDED EXAMPLE DATED APRIL 14 AND ONE OF ONLY SEVEN OF THE CCNA ISSUES DATED AFTER MARCH 4.

To date, this is the only evidence of this Barranquilla to Cartagena flight. Of the seven items recorded used post-March 4th (three covers and four pieces), two have No. C2, three No. C4 and two No. C5. There is one dated Mar. 6, one Mar. 11, one Mar. 9, one Apr. 14 and three Oct. 17.

Ex Johnson. With 2014 Moorhouse certificate..... E. 1,500-2,000



3045



3046

- 3045 **1920, 10c “SCADTA”, Women and Boy Watching Plane - Post-March 4 Flight (C2).** Large margins, tied by violet “Cia. de Navegacion Agencia Barranquilla, Aerea” handstamp, used with National 5c and tied by blue Barranquilla boxed datestamp on small piece just showing “**Pooley**” at bottom, some small faults affecting stamps of little importance, Fine, **one of only seven items** recorded after March 4 and one of three from this late Oct. 17 flight which is confirmed by the addressee “**Pooley**”, ex Johnson, with 1981 R.P.S. and 2014 Moorhouse certificates..... E. 1,000-1,500

- 3046 **1920, 10c “SCADTA”, Tilted Plane Viewed Close-Up from Above - Post-March 4 Flight (C4).** Large margins, tied by violet “Cia. de Navegacion Agencia Barranquilla, Aerea” handstamp, used with National 3c and tied by blue boxed Barranquilla datestamp on small piece, originates from the **Oct. 17, 1920** Bazin flight carrying Charles Pooley, small faults affecting stamp incl. light creases, Fine appearance, **one of only seven items** recorded after March 4 and one of three from this late Oct. 17 flight, ex Johnson, with 2014 Moorhouse certificate..... E. 1,000-1,500



3047

- 3047 ☒ **1920, 10c "SCADTA", Flier in Plane Watching Biplane - Post-March 4 Flight (C5).** Large balanced margins, tied by blue Barranquilla Oct. 17, 1920 boxed datestamp and violet "Cia. de Navegacion Agencia Barranquilla, Aerea" handstamp, used with National 3c which is also tied, on cover to **Charles A. Pooley** in Barranquilla, couple light file folds incl. one which affects CCNA stamp of little consequence and small piece of backflap missing

VERY FINE. A REMARKABLY LATE USE DATED OCT. 17 AND THE ONLY COVER RECORDED FROM THIS DATE. ONLY SEVEN ITEMS TOTAL ARE DATED AFTER MARCH 4.

Captain Rene Bazin later wrote in a letter "During the month of October (1920), I have realized various flights over the mountains with twelve passengers" which is corroborated by his flight plans. It is documented that Bazin took several parties on short trips for a fee. It is believed that Charles Pooley, a man of considerable standing, requested a longer flight with passengers and these items were "souvenirs" of the flight. That is why this cover and the piece in the previous lot show his name. Other than this cover, only two pieces are known from this flight.

Ex Johnson. With 2002 Behr certificate..... E. 3,000-4,000

- 3048 **1920, 10c "SCADTA" Reference of Fakes and Forgeries.** With six mostly on pieces and one cover, incl. No. C2 (2), C3-C4, C9-C10, few on pieces with National 2c or 3c stamps, also No. C4 on cover with National 1c and 2c stamps with fake CCNA stamp and cancels, some quite convincing, Fine, useful reference items.....*Not illustrated* E. 300-400

CCNA SECOND ISSUE

Arranged by flight



3050EX

- 3049 ★ 1920, 10c Green, Air Post (C11; Sanabria 11). Complete sheet of 72 (6x12) with intact margins all around, without gum as issued, clearly shows the format of a block of four “stepped up” to print the sheet, couple minor edge tears not affecting stamps and light creases, Very Fine, a rare complete sheet of which **only two are believed to exist**, signed A. Brun three times, Scott Retail as singles \$4,320.00.....(Photo, p. 34) E. 750-1,000

- 3050 1920, 10c Green, Air Post (C11; Sanabria 11). Six used singles, unused block of eight and two unused singles, large to full margins, used mostly with clear oval Cartagena handstamps, block showing two “stepped up” blocks of four, unused singles slightly toned, small faults except unused block, Fine-Very Fine, a couple signed Rendon, Scott \$1,155.00(Photo Ex) E. 200-300



3051

- 3051 ✉ 1920, 10c Green, Air Post - March 11, 1920 Flight (C11; Sanabria 11). Tied by violet Cartagena oval handstamp, used with National 1c pair, 3c and 5c, each tied by Cartagena Mar. 11, 1920 double-circle datestamps on flown cover to Anibal Lombardi in Barranquilla, arrival backstamp, Very Fine, **only four covers** are recorded on this flight, signed Rendon, ex Boonshaft and Johnson..... E. 1,000-1,500



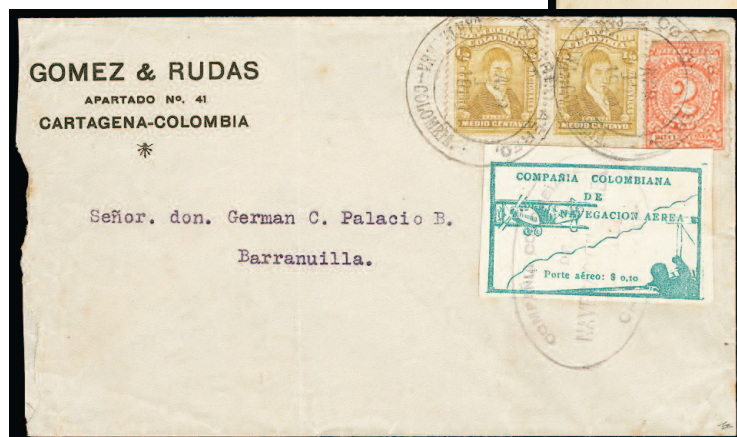
- 3052 ✉ **1920, 10c Green, Air Post - March 11, 1920 Flight (C11; Sanabria 11).** Tied by light violet Cartagena oval handstamp, used with National 2c (2), 3c (2) and 5c, each tied by Cartagena Mar. 11, 1920 double-circle datestamps on flown cover to Anibal Lombardi in Barranquilla, arrival backstamp, some light cover toning (not mentioned on certificate), Very Fine, **only four covers** are recorded on this flight, signed Rendon and with 2014 Moorhouse certificate, ex Goeggel..... E. 750-1,000
- 3053 **1920, 10c Green, Air Post - April 5, 1920 Flight (C11; Sanabria 11).** Large margins, tied by violet Cartagena oval handstamp, used with National 3c tied by clear Apr. 5, 1920 double-circle datestamp on small piece, Very Fine, this is the **only recorded item from this flight**, Bazin mentions "on...the 6th of May 1920, we flew from Cartagena to Barranquilla..." and it is theorized this could have been cancelled the day prior, ex Johnson, with 2014 Moorhouse certificate E. 500-750
- 3054 **1920, 10c Green, Air Post - April 7, 1920 Flight (C11; Sanabria 11).** Five singles, all tied by light violet Cartagena oval handstamps, used with National ½c pair and 5c block of four, tied by Apr. 7, 1920 double-circle datestamps on cover front only to Barranquilla, top left 10c stamp with scuffs and three others with light creases, aesthetic repair at bottom right, Fine and extremely rare, this is the **second largest use** of the 10c stamp and **only known item** from this flight, ex Goeggel, with 2013 Moorhouse certificate..... E. 1,000-1,500



3055



3056



3057

- 3055 ✉ **1920, 10c Green, Air Post - April 16, 1922 Flight (C11; Sanabria 11).** Tied by oval Barranquilla handstamp and "Primer Correo Aereo, Directo de Barranquilla, a Medellín, Barranquilla ____" handstamp, used with National 3c tied by boxed Medellín Apr. 16, 1922 datestamp on cover to Medellín, additional Medellín Apr. 16 backstamp, Very Fine, this contested flight has two varying reports, one indicates pilot Guicciardi Ferruccio arrived in Medellín on Apr. 16 after he got lost enroute and suffered crashes and delayed for weeks, another report notes he left on Apr. 16 and arrived in Medellín on Jul. 26, regardless a fascinating flight ripe for further research, ex Johnson, with 2014 Moorhouse certificate..... E. 400-500
- 3056 ✉ **1920, 10c Green, Air Post - April 16, 1922 Flight (C11; Sanabria 11).** Tied by oval Barranquilla handstamp and "Primer Correo Aereo, Directo de Barranquilla, a Medellín, Barranquilla ____" handstamp, used with National 3c tied by boxed Medellín Apr. 16, 1922 datestamp on cover to Medellín, additional Medellín Apr. 16 backstamp, Very Fine, a similar example to the prior lot of this intriguing flight, only a small handful of covers are believed to exist..... E. 400-500
- 3057 ✉ **1920, 10c Green, Air Post - April 17, 1920 Flight (C11; Sanabria 11).** Large margins, tied by violet Cartagena oval handstamp, used with National 1/2c pair and 2c (faulty), tied by Apr. 17, 1920 double-circle datestamps on "Gomez & Rudas" corner card cover to Barranquilla, arrival backstamp, cover with slightly rough opening at left, still Very Fine, this is the **only known example** from this flight, the pilot Jaques Jourdanet ultimately died in a crash just 12 days later experimenting with flights to Medellín, ex Goeggel, with 2014 Moorhouse certificate..... E. 1,000-1,500

3058

1920, 10c Green, Air Post - April 25, 1920 Flight (C11; Sanabria 11). Large margins, used with National 3c, both tied by bold violet Barranquilla Apr. 25, 1920 oval datestamp on small piece, light horizontal crease of little importance, Very Fine appearance, this is the **only recorded item** for this flight, it is surmised this came from a Jourdanet flight, he ultimately was killed in a crash four days later, ex Johnson, with 2014 Moorhouse certificate E. 400-500



3058



3059



3060 front and back

- 3059 ☒ **1920, 10c Green, Air Post - June 16, 1920 Flight (C11; Sanabria 11).** Three singles, each tied by violet Cartagena oval handstamps, used with National 2c and 5c pair, tied by Jun. 16, 1920 double-circle datestamp on "Franco, Covo & Co." corner card cover to Barranquilla, arrival back-stamp the next day, endorsed "Por Avion "Santa Marta" at bottom left, National 2c with heavy ink from cancel, Very Fine, this is the **only recorded cover** from this flight, ex Peinado and Goeggel, with 2014 Moorhouse certificate E. 1,500-2,000
- 3060 ☒ **1920, 10c Green, Air Post - July 7, 1920 Flight (C11; Sanabria 11).** Two singles on reverse (faint toning), cancelled by violet Cartagena oval handstamp, used with National 3c pair tied by Jul. 7, 1920 double-circle datestamp on "Pombo Hermanos" corner card cover to Barranquilla, arrival datestamp on reverse ties 10c stamps, endorsed "Por Avion "Santa Maria", Very Fine, **only two covers are recorded** for this flight, ex Boonshaft, with 2016 Moorhouse certificate E. 1,000-1,500



3049



3061 detail



3063



3062EX



3065



3064



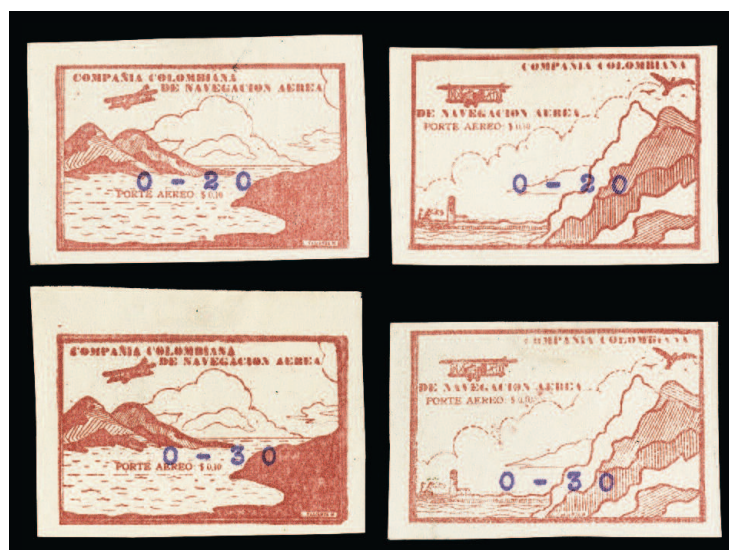
3066



3067

CCNA THIRD AND FOURTH ISSUES

- 3061 ★田 **1920, 10c Brown Red, First Setting, Air Post (Sanabria 14-15, 15a).** Partially rejoined sheet of 72 (6x12), two stamps attached by hinges showing the “Cvalientem Lit.” imprint at bottom left, without gum as issued, full margins all around, showing **re-engraved mountains** on Position 23, folded between row 6 and 7 for housing, some small faults incl. minor creases and tears, otherwise Fine and rare, believed to be **less than five sheets still in existence**, possibly less, each stamp (other than those added) signed Champion and Kessler, unlisted in Scott, Sanabria (1972) Retail as singles \$9,625.00 **(Photo Ex)** E. 1,000-1,500
- 3062 ★田 **1920, 10c Red, Second Setting, Air Post (Sanabria 16-16A, 16a, 16Aa).** Four multiples, incl. block of seven showing tête-bêche (Positions 51-52, 57-58, 63-65), horizontal strip of four with tête-bêche (Positions 63-66) and bottom left juxta-positioned corner block of four with imprint (Positions 55-56, 61-62), also with 10c Green, First Setting with re-engraved mountains (Sanabria 13a) in pair with normal, Very Fine and attractive set of these scarce multiples, unlisted in Scott, Sanabria (1972) Retail \$5,330.00 **(Photo Ex)** E. 750-1,000
- 3063 ☒ **1920, 10c Brown Red, Air Post (Sanabria 16).** Used with National 3c, both tied by oval Cartagena handstamp and Mar. 13, 1920 double-circle datestamp on cover to Baranquilla, same day arrival datestamp on reverse, cover with small piece missing at bottom left from rough opening, file fold slightly affecting 3c and 10c with light tone spot, still Fine and incredibly rare with **only a few believed to exist**, this is the earliest recorded usage as the stamps were issued on Mar. 6, other examples that are believed to exist haven't been on the market for nearly 50 years and are subject to some debate of their genuineness, ex Cole, Serebrakian and Nichols, signed Kessler and A. Diena, with 2015 Moorhouse certificate E. 750-1,000
- 3064 E **1920, “30 cvs” on 10c Black on Yellowish, Air Post Essay Surcharge.** Large margins, clear surcharge in violet, Very Fine and scarce, with 2010 Colomphil certificate E. 200-300
- 3065 **1920, 10c Green, Air Post (Sanabria 12 var).** Top left corner vertical pair, other sides large to full, each stamp with clear violet “Compania Colombiana de Navegacion Aerea, Oficina Central de Administracion de Oficio, Barranquilla” handstamp which was an official seal used by the CCNA, couple small tone spots and trace of a crease, otherwise Very Fine, it is theorized that this is a surcharge rather than cancellation and is the **only recorded example**, illustrated in Gebauer on page 42, ex Cole and Gebauer E. 400-500
- 3066 ★ **1920, “30 cvs” on 10c Air Post Surcharges (Sanabria 19, 23).** Large to full margins, without gum as issued, each with clear surcharges, Very Fine, printed but never placed into use, each signed Kessler, Sanabria (1972) \$500.00 E. 150-200
- 3067 **1920, “30 cvs” on 10c Green, Air Post (Sanabria 19).** Affixed to small piece of envelope, cancelled by two violet “Cia, Colombiana de Navegacion, Aerea, Medellin” ribbon cancels, couple minor scuffs, still Fine, this cancel has not been recorded on any flown cover and is possibly a trial cancel, with 2014 Moorhouse certificate E. 300-400



3068

- 3068 ★ **1920, 20c and 30c on 10c Air Post, Typewritten Surcharges (Sanabria 26-29).** Without gum as issued, large margins all around, bright and fresh, Very Fine, scarce set of these surcharges printed for the Dec. 25, 1920 flight from Medellin to Cartagena, each signed Champion twice and with 2010 Colomphil certificates E. 500-750

3069



- 3069 ☒ **1920, 30c on 10c Air Post, Typewritten Surcharge, Period Instead of Dash (Sanabria 29 var).** Variety showing "0.30" instead of "0-30", used with National 5c (2), tied by violet "Agencia de Medellín" oval handstamp and Dec. 25, 1920 circular datestamp on "Compañía Colombiana de Exportación" cover to New York, additionally franked with 1c "Hospital de San Vicente, Medellín" charity stamp tied by another Dec. 25 circular datestamp, oval Cartagena transit backstamp

VERY FINE. A REMARKABLE COVER OF THE 30-CENT SURCHARGE VARIETY - FLOWN ON THE CRASHED RETURNED FLIGHT OF THE "MEDELLIN" AND ULTIMATELY RESENT VIA SURFACE MAIL. ONLY THREE COVERS HAVE BEEN RECORDED AND THE ONLY EXAMPLE TO A FOREIGN DESTINATION.

Few typewritten surcharged covers have survived as they were used on the return flight of the *Medellin* from Medellín to Cartagena via Puerto Berrio. The plane ran out of fuel on the way to Puerto Berrio and ultimately crashed and was destroyed. Most mail was destroyed but the pilot Bazin managed to salvage some covers and canoed back to Medellín where they were consequently sent by surface mail for onward delivery. Also of note, the Medellín Agency marking is very rarely used. The perfect addition to any Colombian Air Post exhibit.

Illustrated in Bortfelt on page 70. Ex Preston, Neuberger and Johnson. With 2014 Moorhouse certificate. E. 3,000-4,000

3070



- 3070 ☒ **1920, 30c on 10c Air Post, Typewritten Surcharge (Sanabria 29).** Tied by violet Medellín oval ribbon handstamp, used with National 3c tied by Dec. 20, 1920 circular duplex datestamp (also ties 30c stamp) on cover to Cartagena, blue boxed Cartagena Dec. 25 arrival datestamp, cover reduced at left and slightly at bottom

FINE COVER OF THE 30-CENT SURCHARGE, SANABRIA NO. 29 - FLOWN ON THE CRASHED RETURNED FLIGHT OF THE "MEDELLIN". ONLY THREE COVERS HAVE BEEN RECORDED. A MAJOR COLOMBIAN AIR POST RARITY.

Few typewritten surcharged covers have survived as they were used on the return flight of the *Medellin* from Medellín to Cartagena via Puerto Berrio. The plane ran out of fuel on the way to Puerto Berrio and ultimately crashed and was destroyed. Most mail was destroyed but the pilot Bazin managed to salvage some covers and canoed back to Medellín where they were consequently sent by surface mail for onward delivery.

Ex Neuberger. With 2014 Moorhouse certificate. E. 2,000-3,000

SCADTA FIRST ISSUE

Arranged by flight



3071

- 3071 ★ **1920, 30c Black on Rose, 50c Pale Green, Horizontal Pair, Imperforate Between (C14 var, C16 var; Sanabria 17a-18a).** Horizontal pairs, 30c with margin at top, 50c with margin at bottom, h.r., well-centered for this issue, bright colors, couple minor gum wrinkles as usual, Very Fine, a rare pair, **only two pairs of each are believed to exist**, ex Matthews E. 750-1,000

- 3072 **1920, 50c Pale Green, Air Post (C16).** Neat blue Barranquilla Oct. 18 (1920) oval handstamp with date inserted, fresh color, Very Fine and rare, this was the first flight for the 50c rate which was later reduced to 30c about a month after, only four covers and two pieces are recorded E. 200-300



3072



3073

- 3073 **1920, 50c Pale Green, Air Post (C16).** Used with National 1c and 2c, all tied by clear and complete Barranquilla Oct. 18, 1920 handstamp with date inserted on small piece, Very Fine and rare, this was the first flight for the 50c rate which was later reduced to 30c about a month after, only four covers and two pieces are recorded, ex Boonschaft and Johnson, with 1996 Rendon certificate E. 500-750

“COLIBRI” HUMMINGBIRD CANCEL



- 3074 ☒ **1920, 50c Pale Green, Air Post - First Flight from Barranquilla to Girardot (C16).** Tied by violet “Servicio Postal Aereo, S.C.A. de T.A.” oval “Colibri” (hummingbird) cancel, used with National 2c pair tied by Girardot Oct. 20, 1920 circular datestamp on legal sized corner card cover to Bogota, boxed arrival backstamps, 50c and one 2c with defective corners, cover with file fold not affecting stamps

VERY FINE. A SPLENDID COVER OF WHICH ONLY SEVEN ARE RECORDED WITH THE RARE “COLIBRI” CANCEL. EASILY ONE OF THE FINEST STRIKES OF THIS PICTORIAL HANDSTAMP KNOWN.

This flight from Barranquilla to Girardot was flown using a Junkers F-13 named “Colombia”. This was the only flight requiring a 50c surcharge. A contract was eventually signed with the Colombian government setting the fee at 30c. The “Colibri” handstamp was only used on this flight.

Ex Boonshaft and Johnson. With 2014 Moorhouse certificate. E. 3,000-4,000



3074 detail

EXPERIMENTAL FLIGHTS

- 3075 ✉ **1920, 30c Black on Rose, Air Post - Apr. 28, 1921 Experimental Flight (C14).** Tied by blue and violet circular dates-tamps, used with National 3c tied by blue boxed Apr. 28, 1921 of Barranquilla on cover to Bogota, arrival backstamp, Very Fine and scarce..... E. 300-400



3075



3076

- 3076 ✉ **1920, 30c Black on Rose, Air Post - Apr. 29, 1921 Experimental Flight (C14).** Used with National 3c, each tied by violet Girardot Apr. 29, 1921 circular datestamp and target (in transit) on all-over "Julio E. Gerlein" illustrated cover from Barranquilla to Bogota, Very Fine, we have been unable to locate another example of this flight, ex Toro.. E. 400-500



3077

- 3077 ✉ **1920, 30c Black on Rose, Air Post - July 18, 1921 Experimental Flight (C14).** Used with National 3c, each tied by Bogota Jul. 18, 1921 circular datestamps on "Wild & Stubbs" corner card cover to Barranquilla, partial Bogota three-line handstamp on reverse, back-flap mostly missing, otherwise Very Fine E. 400-500

3078



3079



3080

- 3078 ☒ **1920, 30c Black on Rose, Air Post - Aug. 17, 1921 Experimental Flight (C14).** Tied by scarce **Girardot** oval handstamp (in transit), used with National 3c (small fault at top) uncanceled on cover from Bogota to Barranquilla, blue boxed Aug. 17 arrival backstamp, cover opened for display, Very Fine E. 400-500
- 3079 ☒ **1920, 30c Black on Rose, Air Post - Sept. 1, 1921 Experimental Flight (C14).** Used with National 10c, each with violet "Sociedad Colombo-Alemana de Transportes Aereos" three-line handstamp, Very Fine, a rare and handsome cover to an international destination of which few are known, this cover went via Barranquilla before going by ship to Germany, with 2014 Moorhouse certificate E. 1,000-1,500
- 3080 ☒ **1920, 30c Black on Rose, Air Post - Nov. 10, 1921 Scheduled Flight (C14).** Used with National 3c, both tied by violet boxed Bogota Nov. 10, 1921 datestamp (upon arrival) on "Fritz Fuhrhop & Co." corner card cover from Barranquilla to Bogota, 30c also cancelled by blue "clock" cancel, large part of backflap missing, otherwise Very Fine ... E. 300-400



3081

- 3081 ✉ 1920, 30c Black on Rose, Air Post - Nov. 18, 1921 Experimental Flight (C14). Tied by violet "Sociedad Colombo-Alemana de Transportes Aereos" three-line handstamp, used with National 3c and tied by violet boxed Bogota Nov. 18, 1921 datestamp (upon arrival) on cover from Barranquilla to Antonio Mejia in Bogota, typed "Por Hodro-Avion "Colombia" directive at top, Very Fine E. 300-400

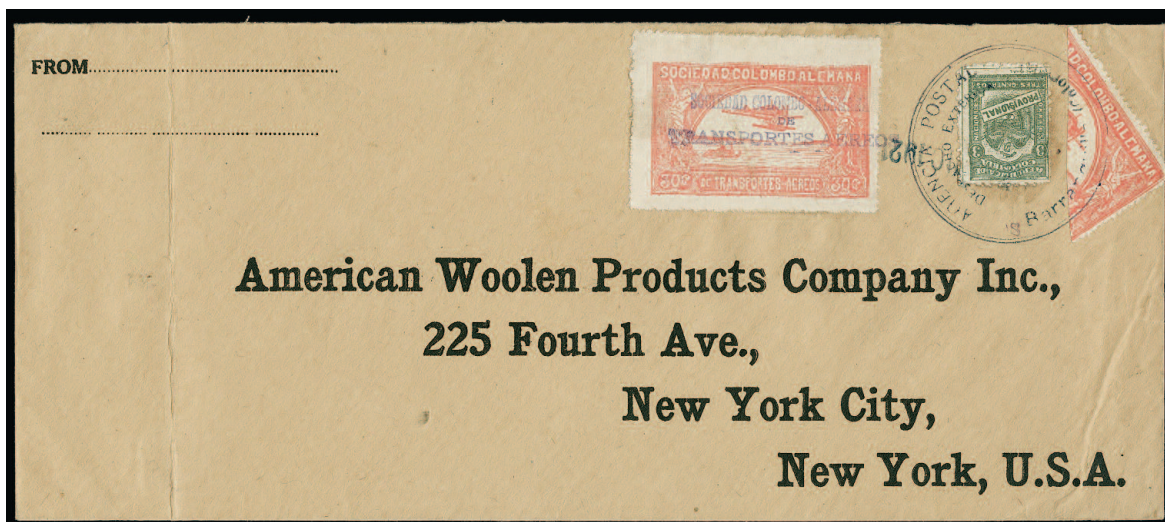


3082

- 3082 ✉ 1920, 30c Black on Rose, Air Post - Oct. 1922 Scheduled Flight (C14). Tied by light Barranquilla handstamp (in transit), cover originating in Berlin, Germany with 3m vertical pair tied by Berlin Sept. 8, 1922 circular datestamps and addressed to Bogota, red Bogota SCADTA handstamp at top left, manuscript "Por Hidroavion de Barranquilla a Bogota" directive at top, Barranquilla transit backstamp, interesting red SCADTA advertisement of services six-line handstamp on reverse, Very Fine, a remarkable incoming combination cover, ex Goeggel, signed Scheer, with 2013 Moorhouse certificate E. 1,000-1,500

SCADTA SECOND ISSUE

Arranged by flight



3083

- 3083 ☒ **1921, 30c Rose, Diagonal Bisect, Air Post (C15 var).** Top right diagonal bisect, tied across cut with National 3c by large blue Barranquilla datestamp (in transit), used with normal 30c Rose and tied by "Sociedad Colomo-Alemana de Transportes Aereos" three-line handstamp on Oct. 1921 legal sized cover with American Woolen Products printed address to **New York**, cover with file fold at far left away from stamps

VERY FINE AND STUNNING SHOWPIECE. THE UNIQUE COMMERCIAL USE THE 30-CENT ROSE BISECT. STATED BY GEBAUER AS "THE GREATEST FIND IN SCADTA STAMPS".

This commercial cover pays the correct 45c rate (30c plus bisect of 15c) for up to 60 grams. Illustrated in Gebauer on page 48, along with the three other known bisects. See lot 3111 for the Colomphil No. 8 ½ bisect.

Ex Cole, Matthews, Gebauer, Friedman and Johnson..... E. 2,000-3,000



3084

- 3084 ☒ **1921, 30c Rose, Air Post - Dec. 15, 1921 Scheduled Flight (C14).** Tied by violet Bogota SCADTA handstamp, used with National 3c tied by Barranquilla 1921 circular datestamp (in transit) on cover to **New York**, light "15 Dic. 1921" straightline datestamp at top, "Olivirio Rodriguez & Co." oval backstamp, cover with minor stains, otherwise Fine

..... E. 300-400



- 3085 ✉ **1921, 15c Blue, Air Post - Mar. 17, 1922 Scheduled Flight (C13).** Tied by violet Girardot SCADTA handstamp and blue boxed Barranquilla datestamp (upon arrival), used with National 3c tied by clear violet Girardot Mar. 7, 1922 boxed datestamp on cover to Behr-Heyder in Barranquilla, manuscript "Por Hidroavion - impresos" directive at top, unsealed backflap indicating this cover was sent via the printed matter rate, Very Fine, quite rare with only 3-5 items believed to pay this rate, with 2016 Moorhouse certificate E. 400-500

CONSULAR FORERUNNERS

- 3086 ★★田 **1920, 30c Black on Rose, 50c Green, Manuscript "G Mejia" in Red (CLEU1-CLEU2).** Mint N.H. blocks of six (3x2), 30c with natural s.e. at left, 50c with natural s.e. at left and bottom, bright colors, minor gum bends as usually seen, Very Fine, a rare matching set of these SCADTA forerunners signed by Mejia in New York, signed to designate use from the United States, these are the **largest recorded multiples**, ex Boonshaft, Scott Retail as singles \$1,800.00 (Photo Ex) E. 750-1,000
- 3087 **1920, 30c Black on Rose, 50c Green, Manuscript "G Mejia" in Red (CLEU1-CLEU2).** 30c with neat circular cancel and small thins, 50c cancelled by well-struck violet Scadta double-circle handstamp of Barranquilla, Fine-Very Fine and rare, it is believed that less than six covers exist, used examples are also seldom encountered, 50c ex Gebauer and Pinzon, with 2016 Moorhouse certificate, undervalued in Scott at \$850.00 E. 500-750
- 3088 **1920, 30c Black on Rose and 50c Pale Green (C14, C16, CLEU1-CLEU2).** No. C14 unused and used with Sept. 8, 1921 (experimental flight), C16 unused, also with unused 30c and 50c with manuscript "G Mejia", latter as vertical pair with sheet margin at bottom, Very Fine, Scott Retail \$465.00 (Photo Ex) E. 150-200

1921-23 PROVISIONAL SURCHARGES

Arranged by Colomphil numbers

The Sociedad Colombo Alemana de Transportes Aéreos (SCADTA) was formed on December 5, 1919. The first two stamps printed in October 1920 were the 30c Black on Rose (Scott C14) and 50c Green (Scott C16). Beginning in March 1921 a number of experimental flights took place until scheduled flights began in September of that same year. Understandably, the 30c stamps were quickly exhausted due to the rapid growth of the air post service. It was due to this shortage that the hastily-overprinted surcharge stamps were pressed into use. The surcharges can be organized into three categories –

1) **30c on 50c*** – to meet the normal 30c rate. Shortages as early as May 1921 are recorded and especially after regular service in September.

2) **10c on 50c** – designed for the new Girardot-Neiva route which began September 19, 1921. 10c stamps were not available until November 24.

3) **20c on 50c** – to meet the new rate change. 20c stamps were not available until December 19, 1921.

* The “30 Cent” surcharge was issued for one day, March 5, 1922.

The catalogue used, printed by Colomphil, is *Handbook of the SCADTA Provisional Surcharges, 1921-1923*, edited by Santiago Cruz and Dieter Bortfeldt. The book accurately lists each of the known surcharges and their varieties, along with the number of examples recorded. Most surcharges have less than half a dozen examples recorded unused, used and/or on cover.



3089

3089 ★ **1921, “30c 30c” on 50c Pale Green, Air Post Surcharge (Colomphil 1; Scott C22).** Small part original gum (certificate notes without gum which is not the case), sheet margin at left, well-centered, fresh colors

VERY FINE. ONE OF THE RAREST COLOMBIAN 1921 AIR POST SURCHARGES. THIS IS THE SOLE RECORDED UNUSED EXAMPLE.

Only one unused, eight used and five covers have been recorded. Ex Boonshaft and Goeggel. Signed A. Brun. With 2014 Moorhouse certificate. Scott \$1,850.00 which is unreasonably low for only one example known. E. 1,500-2,000



3090

3090 **1921, “30c 30c” on 50c Pale Green, Air Post Surcharge (Colomphil 1; Scott C22).** With light violet Bogota used on the May 2, 1921 flight, typical perfs, Fine and rare, **only eight used examples** have been recorded, ex Friedman, with 1984 A.P.S. and 1985 Rendon certificates, Scott \$1,450.00 E. 400-500



3091

- 3091 ☒ **1921, “30c 30c” on 50c Pale Green, Air Post Surchage (Colomphil 1; Scott C22).** Bottom left corner single, used with National 3c, each tied by violet “Colombia-Bogota, Despacho Correspondencia Interior, May 2, 1921” circular datestamps on “El Espectador” printed cover to New York, SCADTA handstamp on reverse, couple light file folds at top away from stamps

VERY FINE. A RARE USE OF THE SCOTT NO. C22 AIR POST SURCHARGE ON COVER. ONLY FIVE COVERS ARE RECORDED, TWO OF WHICH ARE TO NEW YORK.

Despite being addressed to New York, there is no indication of an onwards journey either by way of stamps or postal markings (similar on other recorded cover to New York). With 2016 Moorhouse certificate. E. 1,500-2,000



3092

- 3092 ★ **1921, “Valor 10 Centavos” on 50c Pale Green, Inverted “1” of “10”, Air Post Surchage (Colomphil 2; Scott C18).** Lightly hinged, well-centered, fresh color, Very Fine, rare stamp with a mere **four unused examples recorded**, signed Champion twice, Scott \$1,250.00 E. 500-750

- 3093 **1921, “Valor 10 Centavos” on 50c Pale Green, Inverted “1” of “10”, Air Post Surchage (Colomphil 2; Scott C18).** Centrally struck Girardot oval flight handstamp, exceptionally well-centered for this issue, Extremely Fine, only **eleven used examples are recorded**, ten of which are on covers, with 2009 Moorhouse certificate, Scott \$1,200.00 E. 400-500



3093



3094

- 3094 ☒ **1921, “Valor 10 Centavos” on 50c Pale Green, Inverted “1” of “10”, Air Post Surcharge (Colomphil 2; Scott C18).** With sheet margin at right, tied by bluish Girardot oval handstamp with additional strike on reverse, used with National ½c pair and 2c tied by “Navegacion Aerea Neiva” handstamp, additional strike cancels surcharged stamp, on cover to Dr. Behr-Heyder in Neiva, Neiva Nov. 4, 1921 arrival datestamp, Very Fine, the flight was a useful alternative as surface mail by horseback took four days, **only ten covers** have been recorded, signed Rendon E. 400-500



3095

- 3095 ★ **1921, “Valor 10 Centavos” on 50c Pale Green, Inverted Surcharge with Inverted “1” of “10” (Colomphil 2a; Scott C18 var).** Sheet margin at right, lightly hinged, excellent centering, rich color

VERY FINE. ONE OF TWO UNUSED EXAMPLES RECORDED OF THE INVERTED SURCHARGE OF SCOTT NO. C18. A MAJOR RARITY.

This was the top example of a vertical pair that was subsequently separated. An item missing from even the most advanced Colombia Air Post collections. With 2009 Moorhouse certificate..... E. 1,500-2,000

- 3096 **1921, (Hand) “Valor 10 Centavos” (Hand) on 50c Pale Green, Air Post Surcharge (Colomphil 3; Scott C19 var).** Neat violet “Navegacion Aerea, Neiva” handstamp cancel, Fine and rare, **only six used examples** are known with no recorded covers, with 2010 Colomphil certificate E. 300-400



3096



- 3097 ☒ **1921, (Hand) “Vaolr 10 Centavos” (Hand) on 50c Pale Green, Misspelled “Valor”, Air Post Surcharge (Colomphil 4; Scott C19).** Vertical pair with sheet margin at right, used with “Valor 30 Centavos” Air Post Surcharge (Colomphil 20; Scott C20) with sheet margin at top and left, tied on reverse of cover by Barranquilla Nov. 3, 1921 circular datestamp (in transit), National 1c, 3c (3 different issues) and 10c, all tied on front by same Barranquilla datestamp to Johanna Behr-Heyder in **Cologne, Germany**, arrival backstamp
 VERY FINE. A REMARKABLE PAIR OF NO. C19 USED IN COMBINATION WITH ANOTHER AIR POST SURCHARGE TO AN OVERSEAS DESTINATION. ONLY NINE COVERS OF EITHER SURCHARGED STAMP ARE KNOWN ON COVER.
 Illustrated in Cruz-Bortfeldt on page 14. With 1993 Rendon certificate..... E. 2,000-3,000
- 3098 ☒ **1921, (Hand) “Vaolr 10 Centavos” (Hand) on 50c Pale Green, Misspelled “Valor”, Air Post Surcharge (Colomphil 4; Scott C19).** Bottom sheet margin, tied by Girardot oval handstamp with additional strike on reverse, used with National ½c pair and 2c, all tied by Neiva Nov. 4, 1921 circular datestamp with target (upon arrival) on cover to Dr. Behr-Heyder in Neiva, violet “Navegacion Aerea, Neiva” handstamps on reverse, Very Fine, this is the **earliest date** of the **nine recorded covers**, with 1985 Rendon certificate E. 400-500
- 3099 **1921, “Valor \$0.10” on 50c Pale Green, Air Post Surcharge (Colomphil 5; Scott C24A).** With violet “Valor” surcharge, sheet margin at right, surcharge showing slightly dropped second “o”, lightly struck Girardot oval cancel, well-centered for this issue, Very Fine and scarce, **only sixteen used examples recorded**, nine of which are on covers, signed Bloch and with 2010 Colomphil certificate, Scott \$1,500.00..... E. 400-500
- 3100 **1921, “Valor \$0.10” on 50c Pale Green, Air Post Surcharge (Colomphil 5; Scott C24A).** Vertical pair with sheet margin at top and single with sheet margin at bottom and left, all with red “Valor” surcharge, tied by violet “Sociedad Colombo-Alemana de Transportes Aereos, Medellin” on piece of cover, additionally struck with violet “Manuel Jose Tobon” (agency) handstamp, partial Bogota boxed datestamp on reverse, Very Fine, **only sixteen used examples** are recorded, nine of which are covers, signed Roumet, with 2011 Moorhouse certificate, Scott Retail as singles \$4,500.00 E. 1,000-1,500



Both 3101

- 3101 ☒ **1921, “Valor \$0.10” on 50c Pale Green, Air Post Surcharge (Colomphil 5; Scott C24A).** Two covers, one with red “Valor” and the other with violet “Valor”, each with light Girardot oval handstamp and tied by “Navegacion Aerea, Neiva” handstamp with multiple strikes on front and back, used with National ½c pair and 2c tied by Bogota Nov. 16, 1921 boxed datestamps upon arrival on covers to Dr. Behr-Heyder in Bogota, Very Fine and attractive pair, these constitute **two of the nine covers recorded**, only two other covers went from Neiva to Bogota via Girardot, Scott Retail \$2,000.00 for each cover E. 750-1,000



- 3102 **1921, “Valor \$0.10” on 50c Pale Green, “/” Inserted Over Period, Air Post Surcharge (Colomphil 5c; Scott C24A var).** Tied by faint SCADTA Medellin handstamp and violet “Manuel Jose Tobon” (agency) handstamp on small piece, small part of Bogota boxed datestamp

VERY FINE AND RARE. THE UNIQUE EXAMPLE OF THE “/” OVER PERIOD VARIETY ON SCOTT NO. C24A. A RARE SURCHARGE SHOWPIECE.

Illustrated in Cruz-Bortfeldt on page 16. Ex Goeggel. With 2013 Moorhouse certificate. E. 1,500-2,000

3102



3103

- 3103 ☒ **1921, “Vale \$0.10” on 50c Pale Green, “Vale” Instead of “Valor”, Inverted Surcharge (Colomphil 5 var; Scott C24A var).** Surcharge with mix of red and violet, tied by Girardot oval handstamp with additional strike on reverse, used with National ½c pair and 2c tied by Neiva Nov. 4, 1921 circular datestamp with target (upon arrival) on cover to Dr. Behr-Heyder in Neiva, “Navegacion Aerea, Neiva” handstamps on reverse

VERY FINE AND UNIQUE. THE SOLE RECORDED EXAMPLE OF THIS RARE AND STRIKING SURCHARGE ERROR WITH BOTH THE “VALE” INSTEAD OF “VALOR” AND INVERTED.

To date, no other examples - either mint or used - have been recorded. Illustrated in Cruz-Bortfeldt on supplementary page 18a. Ex Cole. Signed Calves. With 2016 Moorhouse certificate..... E. 2,000-3,000



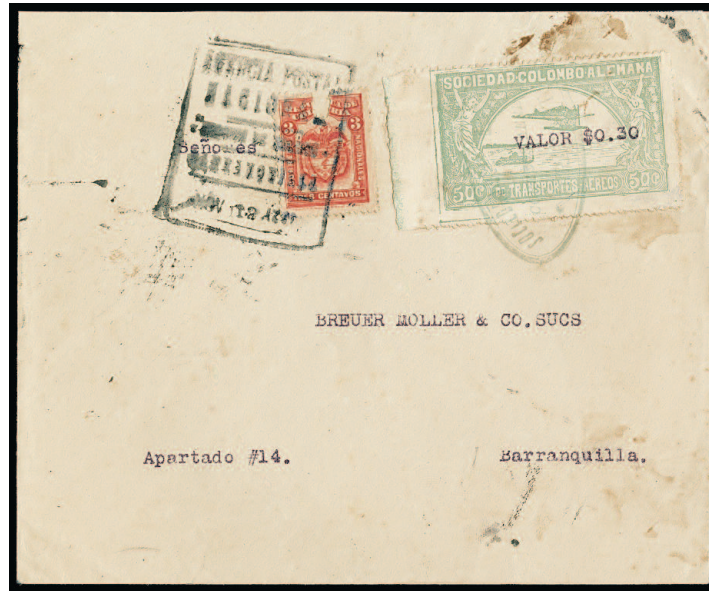
3104

- 3104 **1921, “Valor \$0.30” on 50c Pale Green, Air Post Surcharge (Colomphil 6; Scott C24B).** Sheet margin at right, excellent strike of Girardot handstamp cancel, fresh color, small thins

FINE. A RARE SURCHARGE OF THE COLOMPHIL NO. 6. ONLY FOUR USED EXAMPLES HAVE BEEN RECORDED. THIS IS EASILY ONE OF THE FINEST APPEARING EXAMPLES.

Of the four used examples, two are on cover. No unused examples have been recorded. It is theorized these were quickly produced due to the lack of 30c surcharged stamps in Girardot for use overseas. The other recorded used example off-cover is quite heavily toned.

Ex Friedman. With 2010 Moorhouse certificate. Listed but unpriced in Scott.... E. 1,500-2,000



3105

- 3105 ☒ **1921, “Valor \$0.30” on 50c Pale Green, Air Post Surchage (Colomphil 6; Scott C24B).** Sheet margin at left, tied by light Girardot oval handstamp, used with National 3c (faulty) and tied by boxed Barranquilla Nov. 12, 1921 datestamp (upon arrival) on cover to Barranquilla, boxed arrival datestamp on reverse, some excess adhesive around surcharge stamp

FINE. ONE OF ONLY TWO COVERS RECORDED WITH COLOMPHIL NO. 6. A MAJOR COLOMBIA AIR POST RARITY.

A further two used singles are recorded. No unused examples are known. With 2015 Moorhouse certificate. E. 2,000-3,000



3106

- 3106 ★ **1921, “\$030c” on 50c Pale Green, Air Post Surchage (Colomphil 8; Scott C24).** Large part original gum, well-centered, fresh color
VERY FINE. THIS IS THE SOLE RECORDED UNUSED EXAMPLE OF THIS SURCHARGE - COLOMPHIL NO. 8, SCOTT NO. C24.

While there have been sixteen used examples recorded on or off-cover, this is the only unused example known. Signed Sanabria (twice), Kessler, Schoendorf and Calves. With 2010 Colomphil certificate. Grossly undervalued in Scott at \$1,850.00 for a unique stamp. E. 1,500-2,000

- 3107 **1921, “\$030c” on 50c Pale Green, Air Post Surchage (Colomphil 8; Scott C24).** Sheet margin at left, neat violet three-line handstamp cancel of Bogota, few minor thins, Fine, **only ten used examples recorded**, with a further six known on cover, Scott \$1,450.00 E. 400-500



3107



3108

- 3108 ☒ **1921, “\$030c” on 50c Pale Green, Air Post Surcharge (Colomphil 8; Scott C24).** Rough perforations, with usual violet “Sociedad Colombo Alemana de Transportes Aereos” three-line handstamp, used with National 5c pair tied by Barranquilla Nov. 1921 circular datestamp on cover **to Copenhagen, Denmark**, Bogota oval transit backstamp, cover with small central hole away from stamps

VERY FINE. A RARE INTERNATIONAL DESTINATION USE OF THIS NO. C24 AIR POST SURCHARGE, WITH ONLY SIX COVERS RECORDED. THIS IS THE ONLY EXAMPLE ADDRESSED TO DENMARK.

With 2011 Colomphil certificate. E. 2,000-3,000



3109



3110

- 3109 **1921, “\$030c” on 50c Pale Green, Inverted Surcharge (Colomphil 8a; Scott C24 var).** Part violet Bogota SCADTA three-line handstamp, near perfect centering for this issue, Extremely Fine, easily one of the finest of the **eight used examples recorded**, a further five covers are known, with 2011 Moorhouse certificate E. 400-500
- 3110 ☒ **1921, “\$030c” on 50c Pale Green, Inverted Surcharge (Colomphil 8a; Scott C24 var).** Bottom margin example, cancelled by violet “Sociedad Colombo-Alemana de Transportes Aereos” three-line handstamp in transit in Bogota, used with National 3c tied by Barranquilla Oct. 27, 1921 circular datestamp on cover **to U.S. Steel Products in New York**, private received marking of Nov. 23, cover folded out for display, Fine and rare commercial cover, **only five covers** have been recorded with an additional eight used examples off-cover, ex Goeggel, with 2014 Moorhouse certificate E. 750-1,000

THE UNIQUE TWO-THIRDS BISECT
OF THE "\$030c" ON 50-CENT PALE GREEN



3111

- 3111 ✉ **1921, "\$030c" on 50c Pale Green, $\frac{2}{3}$ Diagonal Bisect (as 20c), Air Post Surcharge (Colomphil 8b var; Scott C24 var).** Bottom right $\frac{2}{3}$ bisect showing bottom portion of surcharge, tied by violet Bogota SCADTA three-line handstamp, used with **50c Pale Green Air Post (C16)** tied by same handstamp and National 3c pair and single, tied by Barranquilla Oct. 1921 circular datestamp on legal sized cover with American Woolen Products printed address to **New York**, National stamps with faults of no significance, cover with file fold at far left away from stamps and small nick at bottom left

VERY FINE. THE UNIQUE $\frac{2}{3}$ BISECT COMMERCIAL USE OF THE COLOMBIA AIR POST SURCHARGE OF COLOMPHIL NO. 8. STATED BY GEBAUER AS "THE GREATEST FIND IN SCADTA STAMPS". A KEY EXHIBITION ITEM.

Remarkably, this commercial cover pays the correct 70c rate (50c plus $\frac{2}{3}$ bisect of 30c) for up to 45 grams. Illustrated in Kessler on page 25 and Gebauer on page 49, along with the three other known bisects. See lot 3083 for the 30c Rose bisect.

Ex Cole, Matthews, Gebauer, Friedman and Johnson. Signed Rendon. With 2014 Moorhouse certificate..... E. 3,000-4,000



3112



3113



3114

- 3112 **1921, “\$030” on 50c Pale Green, Air Post Surchage (Colomphil 9; Scott C23).** Sheet margin at left, well-centered, centrally struck Bogota SCADTA handstamp, Very Fine, a total of **nine used examples are recorded**, two of those on covers, signed A. Brun and with 2010 Colomphil certificate, Scott \$1,450.00..... E. 400-500
- 3113 **1921, “\$030” on 50c Pale Green, Air Post Surchage (Colomphil 9; Scott C23).** Sheet margin at right, neat centrally struck Bogota SCADTA handstamp, minute corner crease, otherwise Fine, this has been previously described as having inverted “cc” after numerals which we believe is just excess ink from the pressure of the surcharge, a total of **nine used examples are recorded**, two of those on covers, signed Schoendorf, ex Friedman, Scott \$1,450.00..... E. 400-500
- 3114 **1921, “Valor 30 ctvos, S.C.A.D.T.A.” on 50c Pale Green, Air Post Surchage (Colomphil 10; Scott C21).** Excellent centering, pretty violet “clock” cancel at bottom right, Very Fine and choice, **only seventeen used examples recorded**, eleven of which are on cover, with 2009 Moorhouse certificate, Scott \$625.00..... E. 300-400



3115

- 3115 ☒ **1921, “Valor 30 ctvos, S.C.A.D.T.A.” on 50c Pale Green, Inverted Surchage (Colomphil 10a; Scott C21 var).** Sheet margin at top, tied by violet “clock” cancel with “14 Nov. 1921” datestamp below, additional strike at left, on “C.D. Roca & Co.” corner card cover **to Ocaña, Costa Rica**, violet boxed “Sellada y lacrada por la Oficina de San Jose” (officially sealed) handstamp and San Jose Dec. 8 transit on reverse, cover with minor edge tears and nicks, top of stamp with tears in margin
- FINE. THE ONLY RECORDED EXAMPLE OF THIS INVERTED SURCHAGE, ON OR OFF COVER. ESPECIALLY DESIRABLE USED ON A COMMERCIAL COVER TO COSTA RICA. AN IMPORTANT ITEM FOR A LARGE GOLD-MEDAL LEVEL EXHIBIT.
- It is believed this cover, while in transit, was given directly to a pilot for delivery outside of the National postal system. This is the first public offering of this cover since a 1979 Robson Lowe (Bermuda) auction.
- Illustrated in Cruz-Bortfeldt on page 32. Ex Mayer. With 2011 Moorhouse certificate..... E. 2,000-3,000

3116

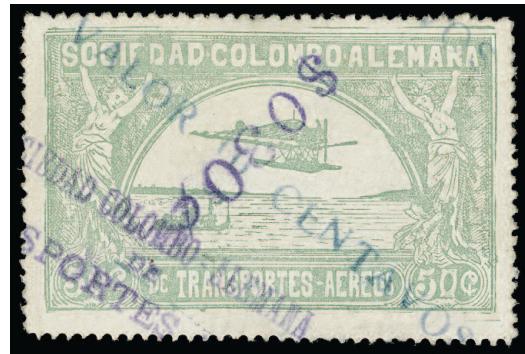


- 3116 ✉ **1921, “30c” on 50c Pale Green, Air Post Surcharge (Colomphil 13).** Sheet margin at bottom, rough perfs at top, tied by violet “Sociedad Colombo-Alemana de Transportes Aereos” three-line handstamp of Bogota, used with National 3c tied by Barranquilla Oct. 1921 (in transit) which also ties 30c stamp, on cover to **Brooklyn, New York**, cover with file fold away from stamps and slight overall wear

FINE EXAMPLE OF ONE OF THE RAREST COLOMBIA 1921-23 SURCHARGED STAMPS ON COVER. ONLY TWO COVERS AND ONE USED EXAMPLE HAVE BEEN RECORDED.

Illustrated in Cruz-Bortfeldt on page 38. Ex Myer, Boonshaft and Goeggel. With 2013 Moorhouse certificate..... E. 3,000-4,000

- 3117 **1921, “\$030c” (Inverted) on “Valor 10 Centavos” on 50c Pale Green, Air Post Surcharge (Colomphil 16).** Excellent centering, with usual three-line Bogota handstamp, slight thinning at bottom, Very Fine appearance, only **seven used examples** have been recorded with no covers known, all of these are believed to have originated on correspondence to New York, ex Cole, Matthews and Friedman, signed Rendon and with 1984 Friedl certificate, unlisted in Scott E. 1,000-1,500



3117



3118

- 3118 **1921, “\$050c” (Inverted) on “Valor 10 Centavos” on 50c Pale Green, Air Post Surcharge (Colomphil 18).** Wide margins, usual three-line Bogota handstamp, minute central thin spot, Very Fine appearance, only **five used examples** have been recorded with no covers known, all of these are believed to have originated on correspondence to New York, ex Cole, Matthews and Friedman, signed Rendon and with 1984 Friedl certificate, unlisted in Scott E. 1,000-1,500

- 3119 ★ **1921, (Hand) “Valor 20 Cts.” (Hand) on 50c Pale Green, Air Post Surcharge (Colomphil 19; Scott C36).** Minor h.r., bright color on fresh paper

FINE AND RARE. ONLY FOUR UNUSED EXAMPLES OF THIS SURCHARGE HAVE BEEN RECORDED.

Only 15 used examples have been recorded. Ex Friedman and “Beville”. Signed Heiman. With 1959 P.F. certificate. Scott \$3,750.00.....
..... E. 1,500-2,000



3119



3120

- 3120 **1921, (Hand) “Valor 20 Cts.” (Hand) on 50c Pale Green, Air Post Surcharge (Colomphil 19; Scott C36).** Tied on small piece by Bogota SCADTA circular handstamp, fresh color, Fine, total of **eight used examples** recorded with a further seven covers known, signed Calves twice, with 2011 Moorhouse certificate, Scott \$2,500.00
..... E. 750-1,000



3121

- 3121 ☒ **1921, (Hand) “Valor 20 Cts.” (Hand) on 50c Pale Green, Air Post Surcharge (Colomphil 19; Scott C36).** Tied by Barranquilla oval handstamp, used with **30 Rose Air Post (C15)** and National 3c pair, former tied by same Barranquilla handstamp and latter by boxed Barranquilla handstamp on cover to Bogota, “clock” cancel with “**18 Dec. 1921**” at bottom left

VERY FINE. A DESIRABLE AND RARE USE OF THIS COLOMPhil NO. 19, SCOTT NO. C36 ON COVER. ONLY SEVEN COVERS HAVE BEEN RECORDED. THIS IS THE EARLIEST KNOWN USE.

Particularly attractive and scarce in combination with the 1921 unsurcharged 30c Air Post.

Illustrated in Cruz-Bortfeldt on page 46. Ex Goeggel. With 2013 Moorhouse certificate.....
..... E. 3,000-4,000



- 3122 1921, “Valor 30 Centavos” on 50c Pale Green, Double Surcharge (Colomphil 21 var; Scott C20 var). Slight doubling of surcharge most noticeable in the “Valor” portion, neat violet Barranquilla handstamp, small thin spot, Very Fine appearance, this is the **only example** we have been able to locate, ex Matthews and Friedman, signed Kessler E. 300-400
- 3123 1921, “Valor 30 Centavos” on 50c Pale Green, Slightly Dented “T”, Inverted Surcharge (Colomphil 21b var; Scott C20 var). Violet surcharge and well-centered, tied by Girardot oval handstamp on large cover to Barranquilla with “The Colombia Railways & Navigation Co., Ltd.” handstamp at top left, boxed blue Barranquilla Oct. 22, 1921 datestamp at bottom, small piece of backflap missing, Very Fine, this is the **only recorded** example of this inverted surcharge known, no unused or off-cover examples are recorded, moreover only four used examples of this surcharge right-side up are known, ex Boonshaft and Friedman E. 1,000-1,500
- 3124 1921, “30 cent.” on 10c Yellow, Air Post Surcharge (Colomphil 26a; Scott C37). Tied by violet Bogota SCADTA handstamp, used with National 3c tied by boxed Barranquilla handstamp (upon arrival) with additional strike tying 30c stamp on “Libreria Santa Fe” corner card cover to Barranquilla, Very Fine, believed to have only been used on the May 5, 1922 flight, **only thirteen covers** have been recorded with a further six used examples known, with 2016 Moorhouse certificate E. 750-1,000
- 3125 1921, “30 cent.” on 10c Yellow, Air Post Surcharge (Colomphil 26b; Scott C37). Lightly hinged, excellent centering, bright fresh color, Extremely Fine, only **eight unused** examples have been recorded of all types (except inverted), ex Gebauer, signed Lombardi and with 2008 Scheller certificate, undervalued in Scott at \$850.00 E. 500-750



3126



3127



3128

- 3126 ★ 1921, "30 cent." on 10c Yellow, Air Post Surcharge (Colomphil 26c; Scott C37). Original gum, vibrant color, minor trace of paper wrinkle of no significance, otherwise Very Fine, only **eight unused** examples have been recorded of all types (except inverted), signed Heiman and with 2010 Moorhouse certificate, undervalued in Scott at \$850.00 E. 500-750
- 3127 ★ 1921, "30 cent." on 10c Yellow, Inverted Surcharge (Colomphil 27; Scott C37 var). Lightly hinged, intense color, well-centered, Very Fine, one of only **five examples** recorded with no used examples known, with 2010 Moorhouse certificate E. 500-750
- 3128 ★ 1921, "Valor 10 Centavos" on 50c Pale Green, Air Post Surcharge (Colomphil 29; Scott C17). Bottom left corner single, small h.r., rich color, surcharge showing the upright "1" of "10" with the serif at top, Very Fine, the Cruz-Bortfeldt book places this item under the "Forero" reprints of 1923 though we believe this to be the original surcharge (of Colomphil 2) as a) no covers are known (other "Forero" reprints were used on cover and sent by him) and b) the "1" could have easily fallen out of the surcharge and placed back inverted, regardless **only eight unused examples are recorded** (one is a block of four, see following lot), ex Goeggel, signed A. Brun and with 2013 Moorhouse certificate, Scott \$1,250.00.... E. 500-750



3129

- 3129 ★田 1921, "Valor 10 Centavos" on 50c Pale Green, Air Post Surcharge (Colomphil 29; Scott C17). Block of four with sheet margin at right, left vertical pair Mint N.H., right pair with slight hinge reinforcement, surcharge showing the upright "1" of "10" with the serif at top, right selvage with some creases

VERY FINE. A REMARKABLE BLOCK OF THIS RARE SURCHARGE, SCOTT NO. C17. ONLY EIGHT UNUSED EXAMPLES EXIST IN TOTAL - FOUR CONTAINED IN THIS BLOCK.

The Cruz-Bortfeldt book places this item under the "Forero" reprints of 1923 though we believe this to be the original surcharge (of Colomphil 2) as a) no covers are known (other "Forero" reprints were used on cover and sent by him) and b) the "1" could have easily fallen out of the surcharge and placed back inverted. No used examples are recorded.

Each stamp with small backstamp. With 2000 P.F. certificate. Scott Retail as singles \$5,000.00. E. 2,000-3,000



3130EX

- 3130 ★ 1923, "Valor 30 Centavos" on 50c Pale Green, "Forero" Air Post Surcharge Reprints (Colomphil 30a, 30e, 30g; Scott C20 vars). Vertical pair with margin at right of No. Colomphil 30e (slight gum toning) showing "alor" instead of "Valor" and surcharge inverted, singles of each Colomphil 30a and 30g, each lightly hinged, former with margin at left (signed Kessler), latter with minor creases and showing "alor 30 Centav" with entire surcharge inverted (signed Cole), Fine-Very Fine, only seven pairs recorded and seventeen unused singles, these "Forero" reprints were produced Jan. 25, 1923 for a flight from Barranquilla to Bogota and done by C. Forero to Mejia, suspected to be of philatelic means.....(Photo Ex) E. 400-500

LATER SCADTA ISSUES



3131



3132



3133EX



3134

- 3131 ★★ 1921, 20c Red Brown, Horizontal Pair, Imperforate Between (C28a). Mint N.H. horizontal strip of three, sheet margin at right, centered to top, bold color, Fine, Scott Retail as pair \$210.00..... E. 150-200
- 3132 1921, 30c Pale Green, Air Post (C29). Lightly struck Barranquilla SCADTA handstamp, also with large part of "Servicio Postal Aereo de Colombia, PANAMA" boxed handstamp which was used upon arrival in Panama, stamp with inconsequential corner crease, Fine strike, **only two stamps of this issue** are recorded with this handstamp, with 2014 Moorhouse certificate..... E. 300-400
- 3133 ★★田 1923-28, 5c-5p SCADTA, Air Posts (C38-C50, CF1). Mint N.H. corner margin blocks of four including 20c Registration, except 2p with selvage at bottom and 20c Registration with selvage at right, bright colors, couple minor gum bends as usual, otherwise Very Fine, Scott Retail as singles \$817.40.....(Photo Ex) E. 200-300
- 3134 匣 1923, 30c Blue, Air Post (C42). Used with National 3c and tied by Barranquilla Aug. 10, 1923 double-circle datestamp on **first flight** cover to **Balboa Heights, Canal Zone**, violet "Primer Correo Aereo, Colombia-America Central" boxed handstamp, Cristobal and Ancon transit backstamps, interesting SCADTA label sealing cover, Very Fine and rare, few covers were carried on this survey flight using Dornier Wal flying boat... E. 200-300



3135

- 3135 ☒ **1921, 20c Red Brown, Violet "R" Registration Handstamp, Se-Tenant Pair (Sanabria 63 var).** Horizontal se-tenant pair with normal (Scott C28), used with 50c Blue, Air Post (C30) and National 3c horizontal strip of three, all tied by violet Bogota handstamps on large part of registered cover to Cartagena, "Dec. 1, 1922" machine date at bottom, cover reduced at left, Fine and extraordinarily rare, this is this **only recorded se-tenant pair on cover**, last sold in a Robson Lowe (Bermuda) sale in 1979, signed F.J. Field on reverse...
..... E. 1,000-1,500

- 3136 **1921, 20c Red Brown, Blue "R" Registration Handstamp (Sanabria 66).** Ty. 1, lightly struck blue SCADTA handstamps, bold color, Fine and incredibly rare, few examples are believed to exist, Sanabria (1972) Retail \$225.00 E. 500-750



3136

END OF SALE — THANK YOU



COPAPHIL was founded in 1983, our purpose is to promote the philately of Colombia and Panama. Colombia and Panama offer the collector wide ranging possibilities from the Spanish colonial era to modern times. With time and patience, you can assemble an interesting collection. There are many areas that have not been fully studied, making for a challenging pursuit, leaving open possibilities for research and new discoveries. The philately of Panama is linked to that of Colombia; until 1903, they were one country.

Some of the collecting opportunities include: pre and post independence pre-philatelic era with a wide range of rates, markings and routes; cancellations; provisional issues; postal stationery; revenues and stamped paper; air mail, including transoceanic mail; local city posts and private carriers; official mail; Colombian States; forgeries and reprints.

The quarterly journal **COPACARTA** contains original research and features. Our web site www.copaphil.org has resources such as an extensive listing of significant auctions through 2003 with important Colombia and Panama going back to the 19th century and links to several more recent auctions as well as important collections. We also publish specialized handbooks and monographs with discounts to members. To order any of these publications email Allan Harris: copaphilusa@aol.com for pricing. Paypal can be used for payment. Currently available are:

Colombia: The Michelsen Affair and the Reprints of the \$5 and \$10 of the 1868 Issue

by Dario Diez

Panama Postal Markings through 1980

by the late Jim Cross, with 2329 markings.

The Stamps of Panama 1878-2010: Vital Statistics

by Federico Brid, with information including postal rates, authorization decrees, and numbers printed.

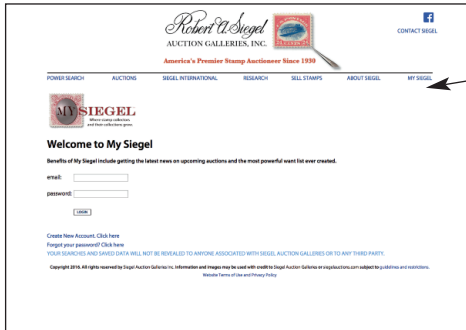
We invite you to consider membership - dues are \$16 per year in the US, \$18 in Canada and \$21 worldwide. To join send payment via paypal to copaphilusa@aol.com.

COPAPHIL will have its biennial meeting at the Sarasota National Stamp Exhibition February 2-4, 2018. It is a not to be missed event with over 50 frames of world class Colombia and Panama material on display.

NEVER MISS OUT AGAIN

REGISTER WITH THE MOST DETAILED WANT LIST IN PHILATELY

Whether you collect Caroline Island covers, used Great Britain or British Africa, you never have to miss out again. Register at our website, and receive email notifications when something matching your interests is part of an upcoming auction. You can also see what we have sold in the past in your area of interest. Just follow the steps below.



Step 1. Register for an account at our website.

You will be sent an email with a link to activate the account. This ensures notifications are received.

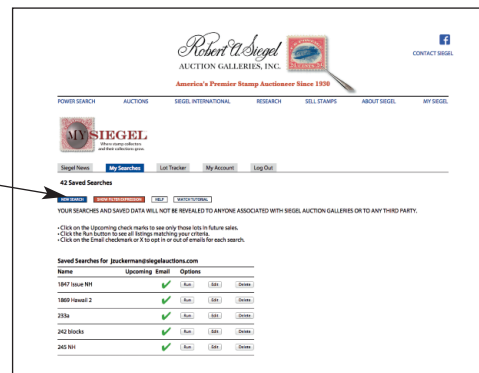
Note: You will also log in here once you've created your account.

Step 2. Go to the My Searches tab and select New Search

This will take you to the Power Search page, where you can create your searches.

Note: Once you've created some searches, you can review them and run them from this page.

There is also a short video tutorial at the bottom of this page showing how to create your want list.



Step 3. Create your search

Select your search criteria on this page, following the steps below.

Note: you can skip steps if you want to create a broader list

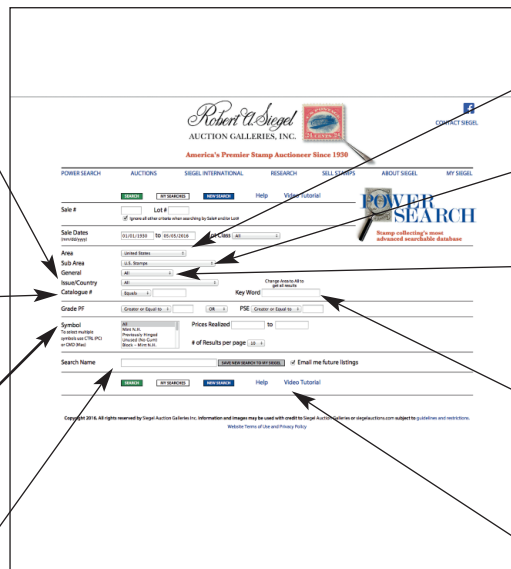
4. If you want a specific country then select it under the Issue/Country field.

Note: you can go right to this step after selecting Area if you are looking for a specific country.

5. Looking for just Penny Blacks? Use the Catalogue # field to restrict your search to a specific stamp (by Scott no.)

6. Use the symbol field to narrow your list to used only, covers only, etc.

8. Name and save your search. It will then appear on your My Searches page.



1. Select the general Area. There are five to choose from.

2. If you want a broad criteria such as all British Commonwealth then use the Sub Area field.

3. If you want a slightly more specific area such as British Africa, then use the General field.

7. Use the Key Word to pick up on any word in descriptions

Use the Help button for ideas about creating lists and for a video tutorial.

Live Internet Bidding at Siegel Auctions

BIDDING FROM YOUR COMPUTER LETS YOU BE PART OF THE LIVE AUCTION FROM ANYWHERE IN THE WORLD!

There's **NO SUBSTITUTE** for following the auction in real time.
Live Internet Bidding lets you bid and buy as though you were right there in the saleroom.
And it's easy.

This step-by-step guide will instruct you how to register, set your browser and use the bidding interface.

Start by following the simple steps to become a registered Live Internet Bidder.
Once you've been approved for bidding, you can listen to the auction and place bids with the click of a mouse.

Registering with STAMP AUCTION NETWORK & SIEGEL AUCTION GALLERIES

Live Internet Bidding is managed by Stamp Auction Network (SAN).
To bid, you must be registered and approved by *both* SAN and Siegel.
To decide what you need to do, choose the description below that best fits you.



I've already registered with SAN and have been approved by Siegel for internet bidding.

I'm a Siegel client, but I'm not registered with SAN.

Go to stampauctionnetwork.com/siegel and click on "Register" at the top. Check the box for Robert A. Siegel Auction Galleries (under "R") and submit the form, indicating you are a Siegel client. Once registered at SAN, you're ready for internet bidding.

I've bid through SAN before, but this is the first time I've bid in a Siegel sale.

Then you just need to be approved by Siegel. Go to stampauctionnetwork.com/siegel and click on "Update Registration" at the top. Your SAN account information will be sent to us for approval (you might be asked for other trade references). Once approved by Siegel for bidding, you're ready for internet bidding.

I've never bid with Siegel, nor registered with SAN.

Go to stampauctionnetwork.com/siegel and click on "Register" at the top. Check the box for Robert A. Siegel Auction Galleries (under "R") and submit the form **with your trade references** (please, no family members or credit card companies as references). Once registered at SAN and approved by Siegel for bidding, you're ready for internet bidding.

Live Internet Bidding works by allowing registered bidders to observe and place bids.

Live Internet Bidding will work with any browser on both PC and Mac operating systems.

Before bidding by internet for the first time, we recommend finding a sale in progress and listening to the public broadcast or logging in as a registered bidder. This will help you develop a feel for the sale tempo and bidding interface.

Log on to the auction at stampauctionnetwork.com

When you're logged on as a Live Internet Bidder, the bidding interface shows a photo and description of the lot, the current bid (and your bidding status), options for placing competitive bids and buttons with bid increments.

- After you click on a bid amount, the auctioneer is immediately notified of your bid.
- Retracting a bid is usually not acceptable, so please bid carefully.
- If you bid and then decide to stop, the "Pass" button will tell the auctioneer you are no longer bidding.
- You can send messages to the auctioneer (for example, a request for extension).
- You can track prior realizations from the bidding screen.



"System Down" or "Lost Connection" events do occasionally happen.

If you have any problems with Live Internet Bidding please call **212-753-6421** for immediate assistance.



BIDS

Use this form to submit absentee bids
or to confirm telephone bids

Sale 1168

November 14, 2017

PADDLE #

1

Please provide the following information:

NAME

ADDRESS

CITY/STATE/ZIP

PHONE MOBILE

EMAIL

2

Have you purchased from us in the past 5 years? ☐ Yes (please go to Section 3)
☐ No (references required below)

STAMP FIRM PHONE

STAMP FIRM PHONE

Please submit references at least **2 business days** before the sale. Bids from new clients will not be executed if satisfactory references are not received in time to be contacted.

3

- Enter the lot number and your corresponding maximum bid in the space below
- Use whole dollar amounts and bid according to the increments (see back of form)
- Bids do not include the **18% Buyer's Premium**, taxes, duty or shipping charges
- Absentee bids will advance at one increment over the next highest competing bid
- "Plus", "Break Tie" or "Buy" bids will not be executed
- Indicate any "Or" bids between lot number/bid entries and bracket your choices
- If you wish to limit the total amount of your bids, follow the instructions below

Lot #	Bid \$	Lot #	Bid \$	Lot #	Bid \$

☐ **Limit Bids:** Check this box if you wish to limit the total hammer price of your bids (excluding 18% Buyer's Premium, taxes, duty and shipping costs). Your bids will be executed until your bidding limit has been reached. The total amount you wish to bid is \$

4

By signing this form, you agree to all of the Conditions of Sale printed in the sale catalogue (printed and digital), including but not limited to a) payment in the manner demanded by the Siegel firm, and b) payment of the 18% Buyer's Premium, any sales tax or customs duty, shipping costs, late charges and

other prescribed charges. You agree that your bids will be executed as a courtesy by Siegel, but you waive the right to make any claim against Siegel or its employees arising from these bids or your participation in the sale. You agree to honor all bids as submitted, regardless of any errors or omissions.

SIGNED DATE

Mail the signed form to Siegel Bid Department, 6 West 48th St., 9th Floor, New York, NY 10036
or email to stamps@siegelauctions.com
or fax to 212-753-6429



Additional Bids

Sale 1168

November 14, 2017

PADDLE #

Lot #	Bid \$	Lot #	Bid \$	Lot #	Bid \$

Shipping & Insurance

We will be pleased to arrange for shipping and transit insurance for purchases in this sale, except for lots marked or announced as "floor sale only." To expedite billing and delivery to hundreds of buyers in each sale, we use standard charges for postage and insurance under our policy. These charges are based on the package weight and mailing requirements, according to the schedule shown here. Our standard charges do not include a fee for our services, and they may be slightly more or less than the actual postage or Fedex fee. We ask all buyers to remit the invoiced amount for shipping and insurance.

Transit insurance is provided in all cases, except when the buyer has furnished us with documentation that insurance is effective under the buyer's own policy.

There will be no added insurance charge for shipments of less than \$75,000 value. Shipments valued in excess of \$75,000 may require supplemental insurance and/or special courier service, the estimated cost of which will be furnished to the buyer prior to shipment. If the buyer refuses to pay the estimated charges or furnish proof of self-insured coverage, the buyer will be responsible for picking up the lots at our office and any resulting sales tax.

Standard Shipping Charges

Weight Class	Shipping Method	Charge
Up to 2 lbs.	Fedex Envelope	\$25
Over 2 lbs.	Fedex Box	\$35 - \$50*
Outside US	Fedex	\$50 - \$100**
Bulky Lots	Fedex Ground or Express	By weight

* Up to \$75,000 value and up to 5 lbs; additional charge may apply to packages exceeding limits

** Buyers outside United States are liable for any applicable customs duty and clearance charges. An accurate declaration of contents and value will be made on all packages and import/export documents. **Siegel may refuse to ship lots to certain countries with a high risk factor.**

2/2015

Bidding Increments

The auctioneer may regulate the bidding at his discretion. However, to assist absentee bidders in establishing their maximum bids, the increments shown here will be used in most cases. We recommend that written bids conform to these increments—bids that do not will be reduced accordingly.

Bid	Increment	Bid	Increment
Up to \$200	\$10	\$7,000-20,000	\$500
\$200-500	\$25	\$20,000-30,000	\$1,000
\$500-1,000	\$50	\$30,000-70,000	\$2,500
\$1,000-3,000	\$100	\$70,000-140,000	\$5,000
\$3,000-7,000	\$250	\$140,000-300,000	\$10,000

Robert A. Siegel Auction Galleries, Inc.
Prices Realized for
Sale 1168 11/14/2017 The Barry P. Fletcher Collection of Colombian Air Post Issues

Lot#	Realized	Lot#	Realized	Lot#	Realized	Lot#	Realized
3001	600	3037	2,900	3073	300	3109	550
3002	900	3038	6,500	3074	4,000	3110	850
3003	1,300	3039	5,000	3075	200	3111	3,500
3004	1,900	3040	1,200	3076	325	3112	600
3005	4,000	3041	4,250	3077	425	3113	350
3006	4,750	3042	5,250	3078	325	3114	425
3007	1,600	3043	5,250	3079	550	3115	3,500
3008	3,750	3044	1,100	3080	225	3116	3,250
3009	1,100	3045	600	3081	275	3117	750
3010	1,500	3046	1,600	3082	1,800	3118	750
3011	2,900	3047	5,250	3083	2,300	3119	2,800
3012	1,000	3048	225	3084	200	3120	1,100
3013	1,300	3049	1,500	3085	450	3121	2,700
3014	15,000	3050	300	3086	800	3122	200
3015	3,000	3051	1,700	3087	425	3123	1,400
3016	2,900	3052	1,200	3088	110	3124	850
3017	2,400	3053	550	3089	3,750	3125	1,300
3018	3,750	3054	1,800	3090	900	3126	1,200
3019	3,750	3055	600	3091	1,600	3127	950
3020	10,500	3056	350	3092	1,600	3128	1,200
3021	6,750	3057	1,600	3093	700	3129	2,700
3022	4,250	3058	250	3094	425	3130	250
3023	5,250	3059	2,200	3095	1,500	3131	190
3024	1,300	3060	1,700	3096	375	3132	150
3025	2,300	3061	2,400	3097	2,300	3133	200
3026	1,700	3062	2,000	3098	250	3134	180
3027	4,500	3063	1,200	3099	475	3135	1,600
3028	2,100	3064	550	3100	700	3136	550
3029	4,500	3065	800	3101	1,200		
3030	55,000	3066	425	3102	2,100		
3031	4,250	3067	425	3103	1,900		
3032	1,100	3068	2,200	3104	2,600		
3033	1,700	3069	5,500	3105	3,250		
3034	2,900	3070	4,250	3106	2,700		
3035	2,900	3071	1,000	3107	600		
3036	4,250	3072	110	3108	2,400		